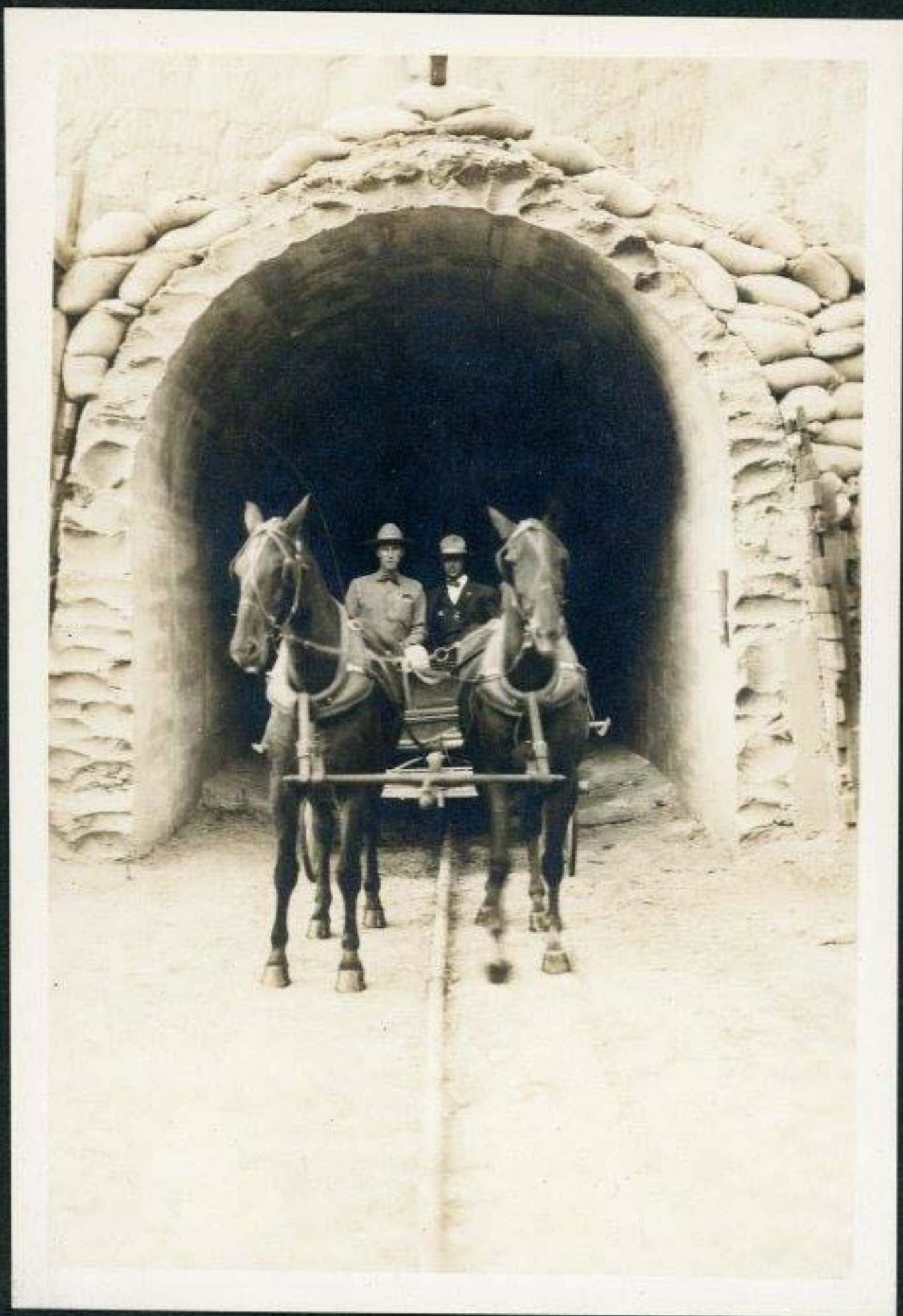


Views of Construction on Los Angeles Aqueduct



1.

• One of the finished Tunnels in the Saugus Div. •



2.

• Building the Core Wall of the •

• FAIRMONT DAM •



3. Steam Shovel excavating deep cuts in the

• ANTELOPE DIVISION •



4.  
• Aqueduct in the Red Rock Country •  
• lined & ready for Cover •



5.

Putting the Concrete Cover on the Aqueduct in the

• MOJAVE DIVISION •



Building the Aqueduct through the Mojave Desert.



6.

• A Section of finished Conduit •

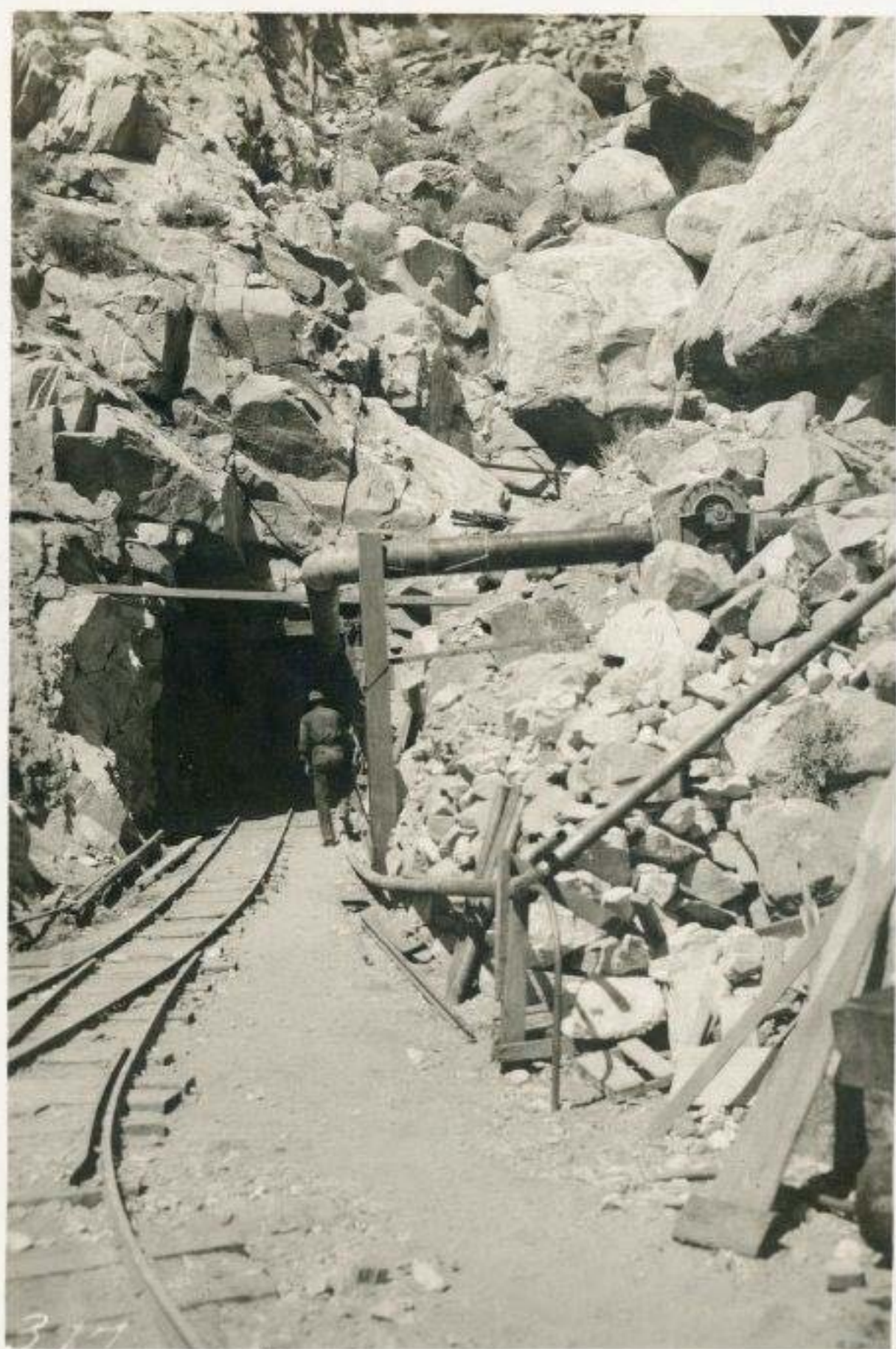




7.

Aqueduct Construction Camp in the

• JAWBONE DIVISION •



8.

Tunnel Adit in the Boulder Peak Section.



9. The Trail to Tunnel 12 in the Boulder Peak Section.



10.

Building the Conduit on steep Hillside in the

• GRAPEVINE DIVISION •



11.

Putting the Cover on the Side Hill Work in the

GRAPEVINE DIVISION.



12.

Concrete Flume in Water Canyon

◦ JAWBONE DIVISION ◦



13.

• Aerial Tramway for lifting the men & materials to •  
• the side Hill work in •

• SAND CANYON •

• GRAPEVINE DIVISION •



14.

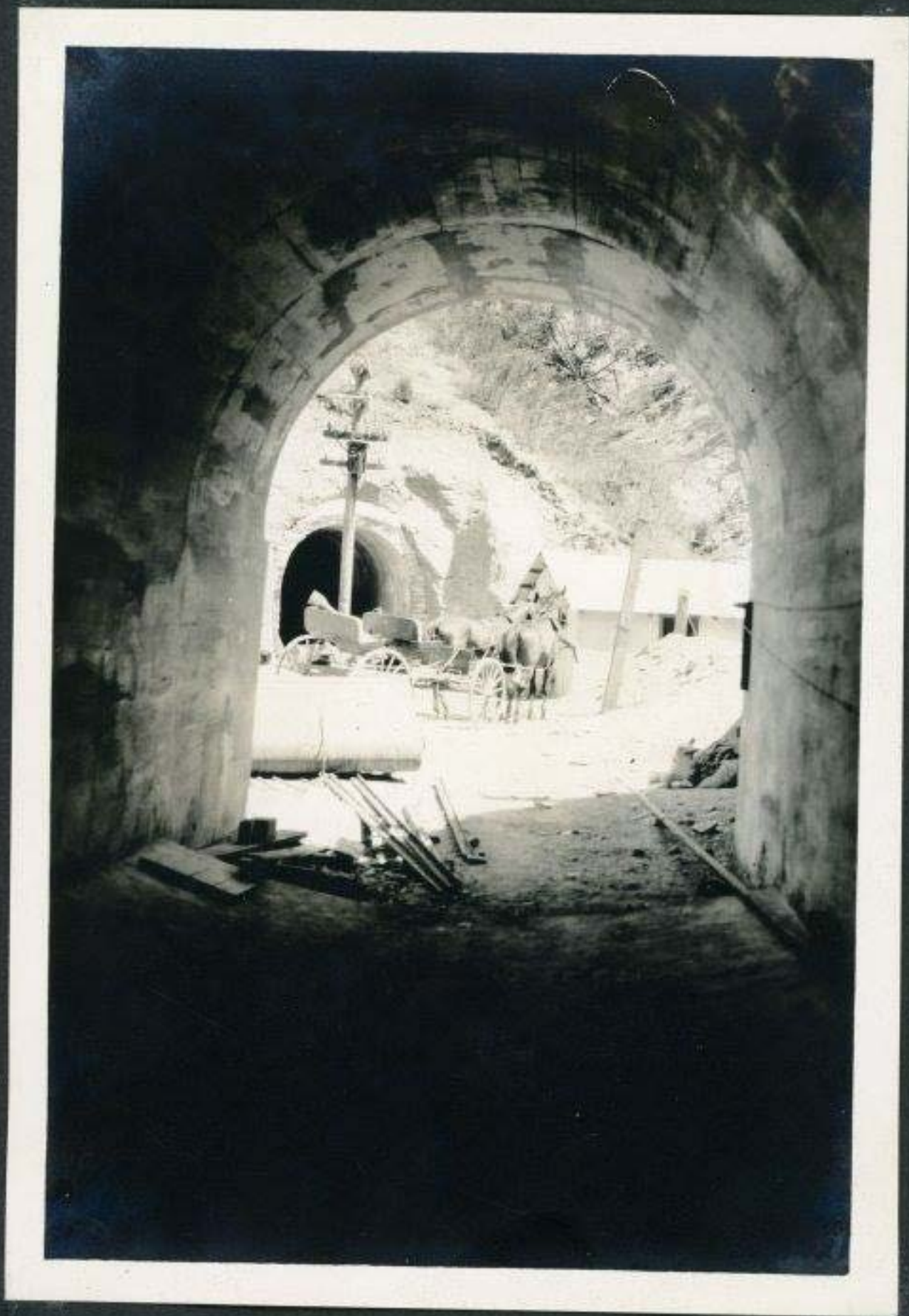
• Construction Camp in SAND CANYON •





15.

• Caterpillar Traction Engine hauling Rock for Concrete. •



16.

Two of the finished Tunnels in the  
• SAUGUS DIVISION •



17.

• A finished Tunnel in the •  
• JAWBONE DIVISION •



18.

• South Portal of the ELIZABETH TUNNEL •

This Tunnel is  $5\frac{1}{4}$  Miles long.

3 Miles of it have already been driven.



19.

• PRIZE TUNNEL CREW • Los Angeles Aqueduct •

This Crew made a footage of 1061 feet at the North End of Tunnel 17 M. during the Month of August, 1909, which is the World's Record in Tunnel driving.



20.

◦ DOVE SPRINGS CAMP on the RED ROCK SPUR ◦  
◦ Railroad built by the City. ◦



21.

• Dredge N<sup>o</sup> 1 in OWENS VALLEY DIVISION •



22.

• Dredge №1. Undercutting Bank of main Canal with •  
• Water Jet. •





23.

• Municipal Cement Plant at MONOLITH. Built by City •  
• of Los Angeles in Connection with the Aqueduct. •