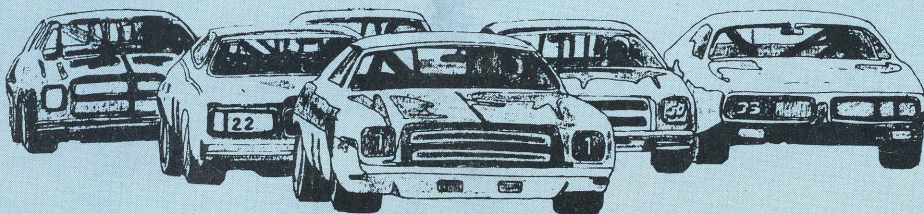


SAUGUS SPEEDWAY



1982

Photo-Clocks by Lyn

A WINNING COMBINATION.....

YOUR PICTURE IN A PHOTO-CLOCK BY LYN !



Your photos, artwork, memorabilia etc displayed in a 10" wide by 12" high Walnut shadow box and featuring an accurate quartz clock movement with sweep second hand that advances in exact one-second increments.

Special mirror border and clock numerals contrast with Walnut-stained solid-wood frame to add the final touch of elegance.

A fashionable, functional addition to home, office or shop. A perfect gift. One that is sure to be remembered, to be enjoyed and to be treasured... Moment by moment.....



Showcase your favorite photo in style.....

PHOTO-CLOCKS AVAILABLE TWO WAYS...

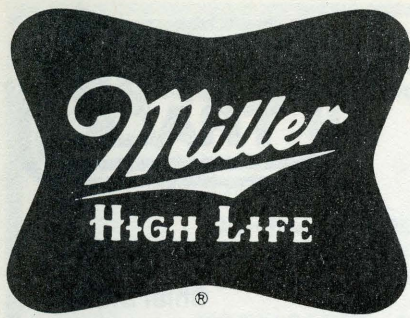
1. Send your pictures, artwork, memorabilia etc. to Photo-Clocks by Lyn for "custom-created" clocks.
2. Buy a Photo-Clock "kit" and "do-it-yourself". Easy instructions and self-adhesive backing enable you to create your own "master (time) piece".



Photo-Clocks
by Lyn

(805) 255-3195

For brochure on Photo-Clocks,
Send self-addressed, stamped
envelope to: Photo-Clocks
25000 Hawkbryn #47
Newhall, Ca. 91321



POINT STANDINGS



Modified

1. 25 Dan Press 125
2. 50 Ken Davis 100
3. 37 Loren Spangler 95
4. 46 Harry Brady 90
5. 57 Tom Finneran 85
6. 77 Joe Ruggles Jr. 85
7. 90 Bruce Erickson 80
8. 39 Hans Wesski 70
9. 51 Bob Switzer 70
10. 72 Don Daugherty 65

Sportsman

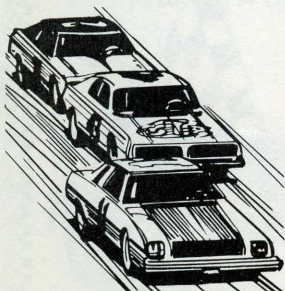
1. 25 Bill Sedgwick 145
2. 45 Brad Miller 100
3. 76 Jimmy Menzi 95
4. 08 Dave Phipps 90
5. 44 Bob Lyon 85
6. 88 Jim Kent 85
7. 19 Les Cooper 80
8. 17 Larry Warholic 80
9. 70 Ray Hooper Jr. 70
10. 82 Rick Heikkinen 65

Street Stock

1. 160 Dave Harrison 215
2. 09 Ken Bosse 185
3. 14 Kevin McCurdy 175
4. 97 Bill McKnight 165
5. 15 Greg Scates 145
6. 111 Ronald Main 120
7. 81 L.A. Woodside 110
8. 26 Jim Gardella 105
9. 42 Dennis Dyer 100
10. 39 John Redmond 95

MODIFIED QUALIFYING RECORD		SPORTSMAN QUALIFYING RECORD		STREET STOCK QUALIFYING RECORD	
15:80		Pre-1981 Rules 16:93		19:47	
Ron Hornaday Jr.	Simi	John Covan	Simi	Scott Klassen	Ventura
9/19/81	Camaro	Buick 9/27/80	70.88	8/29/81	Chevelle
Speed	75.95	1981 Rules	17:39	Speed	61.63
		Roman Calczynski	Van Nuys		
		Pontiac 9/26/81	69.01		

COMING ATTRACTIONS



STOCK CAR RACES

- APRIL 10 MODIFIEDS-SPORTSMAN-STREET STOCKS-FIGURE EIGHTS
- APRIL 17 MODIFIEDS-SPORTSMAN-STREET STOCKS-FIGURE EIGHTS
- APRIL 24 MODIFIEDS-SPORTSMAN-STREET STOCKS-FIGURE EIGHTS
PLUS GIANT DESTRUCTION DERBY

Happy Easter



OFFICIALS

Marshall Wilkings

PROMOTER & GENERAL MANAGER



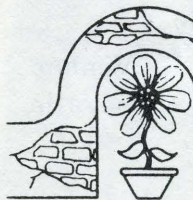
Lyn Pherigo
Virg Kilpatrick
Tad Meyers
Helen Wilkings
Jannette Payne
Mary Duran
Carole Hindman
George Duran
Joe Payne
Herb Thompson
Daniel Carroll
Gumie Rodrigues
Keith Landis
Craig Sanford

Publicity & Program Director
Announcer
Scoreboard Operator
Office Manager
Ticket Office
Ticket Office
Ticket Office
Front Gate Mgr.
Front Gate Asst.
Head Fireman
Track Crew
Track Crew
Track Crew
Track Crew

Rob & Martie Parker

George Stiles
Max Prusa
Frank Garofalo
Monte Monteleone
Frank Click
Jim Gresham
Tony Olson
Barry Wood
Brynda Stiles
Stephanie Colbert
Debbie Adams
Cindy Monteleone
Ollie Click
Lynn Dunlap
Track Photography

Chief Steward
Starter
Assistant Starter
Technical Director
Technical Inspector
Technical Inspector
Pit Manager
Pit Steward
Chief Scorer
Pit Gate Mgr./Scorer
Scorer
Radio/Pit Gate
Pit Gate
Pit Gate



(805) 255-7770

Valencia Florist

23760 LYONS AVE. NEWHALL, CA. 91321

Worldwide
WALLY FORD



Delivery
STEVE HANAUER



TOON TOWNE

COLLECTABLE RECORDS

Steve Colbert
(213) 368-3355

16940 Chatsworth St.
Granada Hills, Ca. 91344

DON'T GO HOME *without a souvenir from* Saugus Speedway

For memories that last long after the checkered flag falls.....
Visit the Saugus Speedway program booth located behind the fourth turn grandstand.



Hats



Jackets



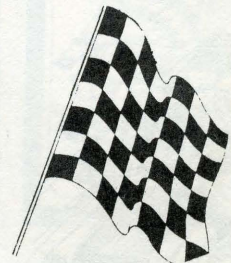
"T" Shirts



Jerseys



Ladies "T"s



Checkered
Flags

Photo-Clock BY Lyn

A winning combination.
Your picture in a PHOTO-CLOCK by Lyn



Patches



Pennants

Lil' John AUTO PARTS PRESENTS LAST WEEKS RESULTS

OPENING NIGHT RACE RESULTS, SAUGUS SPEEDWAY

FAST TIMES

Modified OREN PROSSER, Simi, Camaro, 16:80
Sportsman RAY HOOPER JR., Valencia, Pontiac, 18:13
Street Stock RONALD MAIN, Chatsworth, Chevelle, 19:77

TROPHY DASHES 4-LAPS

Modified DAN PRESS, Newhall; PROSSER; RON ESAU, Lakeside; RON HORNADAY Jr. Cyn Ctry.
Sportsman BILL SEDGWICK, Van Nuys; HOOPER; KEN SAPPER, La Crescenta,
 LARRY WARHOLIC, North Hollywood.
Street Stock KEVIN McCURDY, Ventura; L.A. WOODSIDE, Saugus; MAIN; DENNIS DYER, Acton.
Figure eight DAVE HARRISON, Sylmar; McCURDY; WOODSIDE; GREG SCATES, Newhall.

MAIN EVENTS

Modified 40-laps PRESS (40); LOREN SPANGLER, Northridge (40); HARRY BRADY, Canyon Country (40); KEN DAVIS, W. Covina (40); BRUCE ERICKSON, Reseda (40); TOM FINNERAN, (40); HANS WESSKI, Simi (40); JOE RUGGLES, Valencia (39); BOB SWITZER, Chatsworth (39); ALLEN THACKER, (39); DON DAUGHERTY, Simi (39); GARY CHEEK, Saugus (37); TIM MITCHELL, Tujunga (35); STEVE PARRISH, Santa Monica (34); PROSSER (33); SAPPER (30); HORNADAY (21); SAM PRICE, Sun Valley (21) TOM REILLY, Azusa (17); CHARLIE SAIED, North Hollywood (16); DAN O'DONNELL, Reseda (16); DARYL KRATZ, Saugus (8); CHRIS CAMPANELLA, Sepulveda (3); ROMAN CALCZYNSKI, Van Nuys (2); ESAU (2).

Sportsman 30-laps SEDGWICK (30); JIMMY MENZI, Reseda (30); DAVE PHIPPS, Reseda (30); BOB LYON, Newhall (30); BRAD MILLER, Newhall (30); LES COOPER (30); JIM KENT, Saugus (30); RICK HEIKKINEN, Newhall (29); WARHOLIC (29); JOE ASTONE, San Fernando (19); JOE RUGGLES JR., Valencia (12); STEVE COLBERT, Miss. Hills (7); CHUCK BERRY, Wd. Hills (7); BOB BOGAARD, Cyn Ctry (7); MARK PERRY, Sylmar (7); GABBY GARRISON, Long Beach (6); HOOPER (1); SAPPER (1).

Street Stock 25-laps HARRISON (25); JOHN REDMOND, Saugus (40); MAIN (40); DYER (25); KEN BOSSE; DAVID BRANDON, Reseda (25); SCATES (25); McCURDY (25); BILL McKNIGHT, Northridge (25) ALAN McCORD, Wd. Hills (25); JOHN CRAN, Reseda (25); JEFF PHILLIPS, Camarillo (25); PAMM WOODSIDE, Saugus (25); WM. CONVERSE, Los Angeles (25); DAN WILCOX, Newbury Park (25); DAVE DUNLAP, Cyn Ctry (24); SANDY GARCIA, Can. Pk. (23); TERRY JOHNSON, Van Nuys (17); WOODSIDE (15); DWIGHT KUYKENDALL, Sepulveda (13); RUSTY PARR, Newhall (12); DAVAR (12); JOHN KIRBY, Ventura (3); JIM GARDELLA, Valencia (2).

Figure eight 15-laps GARDELLA (15); BOSSE (15); McKNIGHT (15) HARRISON (15); DAVE HARD (15); BRYAN HAYDEN, Saugus (15); McCURDY (15); SCATES (14); WOODSIDE (14) JOHNSON (14).

ATTENDANCE 4,214 (paid)

Lil' John Auto Parts

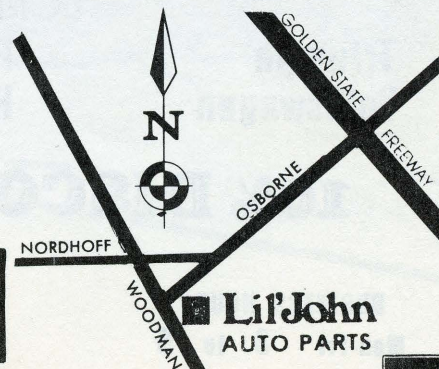
Featuring A Complete Inventory Of Foreign & Domestic Parts And Accessories At Discount Prices.
 New & Rebuilt Parts.

Mon - Fri 8 AM - 8 PM
 Saturday 8 AM - 6 PM
 Sunday 9 AM - 5 PM

891-8521

Se Habla Espanol

**5% DISCOUNT
 WITH MENTION OF THIS AD!**



**Lil' John
 AUTO PARTS**



8944 WOODMAN AVE., ARLETA, CA. 91331



DENNIS JOHNSON

AUTO PAINT AND BODY

786-5501

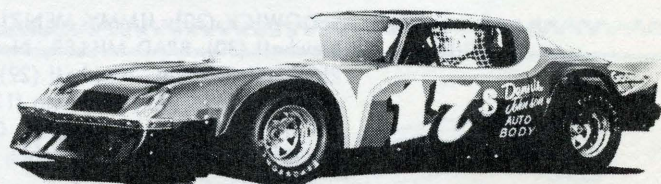
6028 HAZELTINE AVE.
VAN NUYS, CALIFORNIA

Special Prices

on complete paint jobs with this ad

\$100 Off on all Factory Colors

call for info and quote



AAA

FOREIGN AUTO PARTS & SALVAGE

765-1970

9101 GLENOAKS BLVD.
SUN VALLEY, CA. 91352

SPECIALIZING

IN NEW AND USED AUTO PARTS FOR

Triumph
Volkswagen

Fiat
Honda

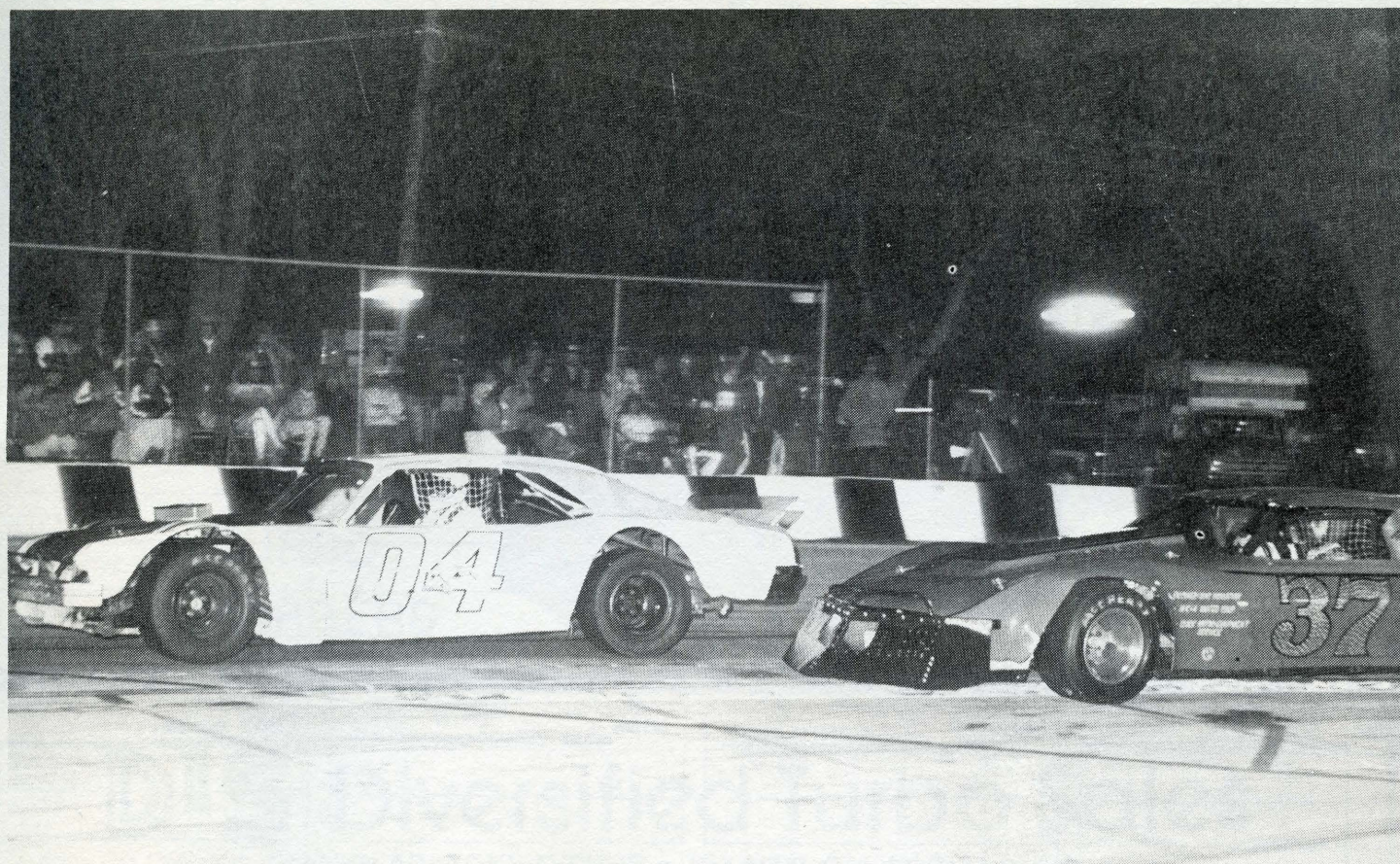
Audi
Porsche

Toyota
Datsun

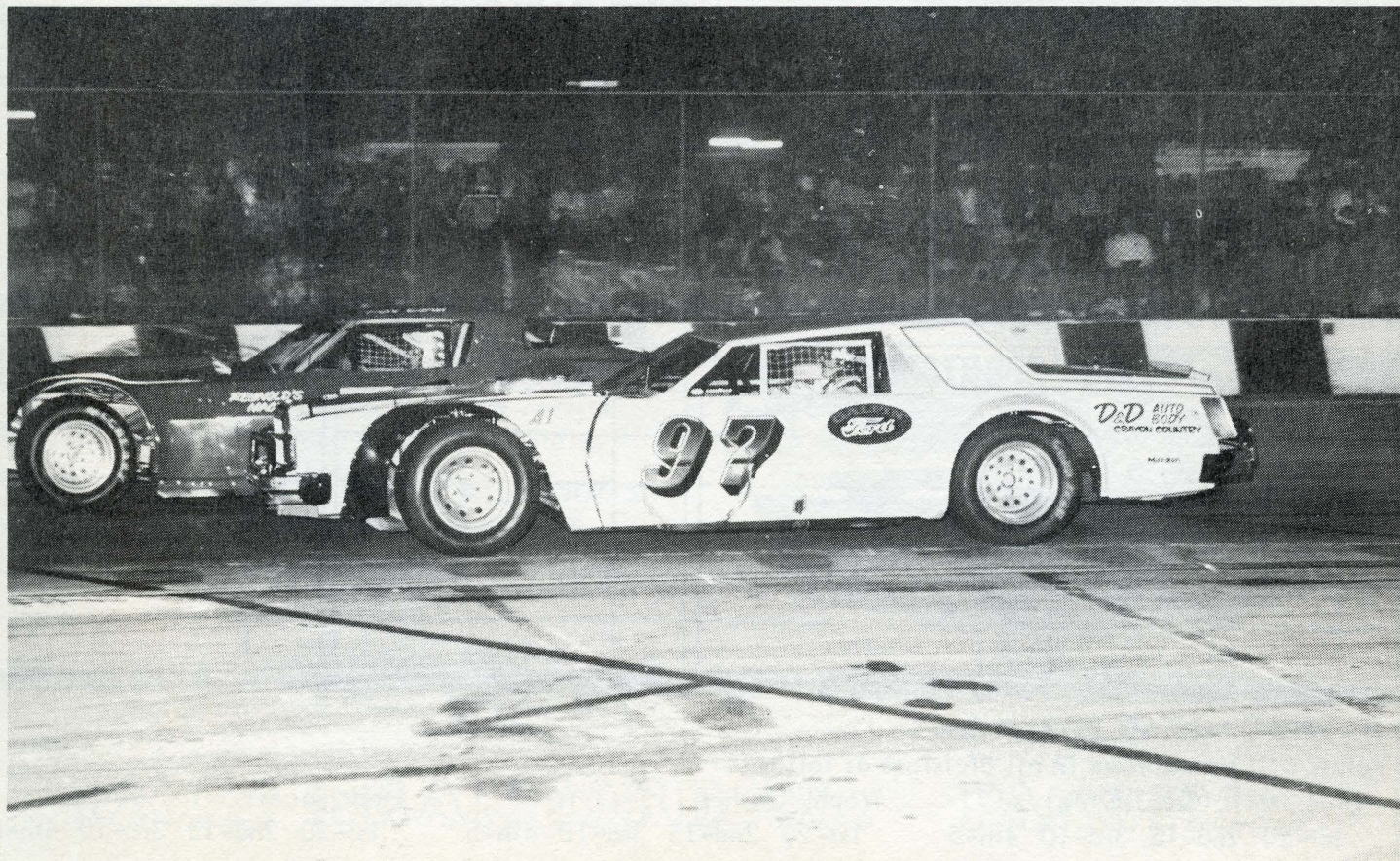
10% DISCOUNT WITH THIS AD!

BUSINESS HOURS
Mon-Fri 8 to 5
Saturday 8 to 2

30 Day Guarantee
on engine, transmissions
& rearends



Parrish (04) and Spangler (37) battle for lead during Modified main on opening night.



Hornaday (97) and Esau (22) charge through the turns on opening night.

KLAC

570



THE RACING STATION

SOUTHERN CALIFORNIA'S
MOST POPULAR
COUNTRY MUSIC STATION

LAP-BY-LAP COVERAGE OF PREMIER
AUTO RACES THROUGHOUT THE YEAR.

AUTO RACING REPORTS WITH MARK HELMER.

GREEN FLAG FRIDAYS, 7:30 PM
CHECKERED FLAG SUNDAYS, 6:30 PM

TROPHY DASHES

[FOUR LAPS, FOUR FASTEST QUALIFIERS IN INVERTED ORDER]

Laps ___ MODIFIED	Laps ___ SPORTSMAN	Laps ___ STREET STOCK	Laps ___ FIGURE "8"

HEAT RACES

Laps ___	Laps ___	Laps ___	Laps ___

HEAT RACES

SEMI MAIN EVENTS

Laps ___	Laps ___	Laps ___	Laps ___

MAIN EVENTS

MODIFIED 40 LAPS	SPORTSMAN ___ LAPS	STOCK OVAL 25 LAPS	FIGURE 8 15 LAPS

CHAMPIONSHIP POINTS.....

Points will be awarded in all divisions as follows:

Time Trials (Qualifying)

Trophy Dashes

Heat Races

1st-20 2nd-15 3rd-10 4th-5

1st-20 2nd-15 3rd-10 4th-5

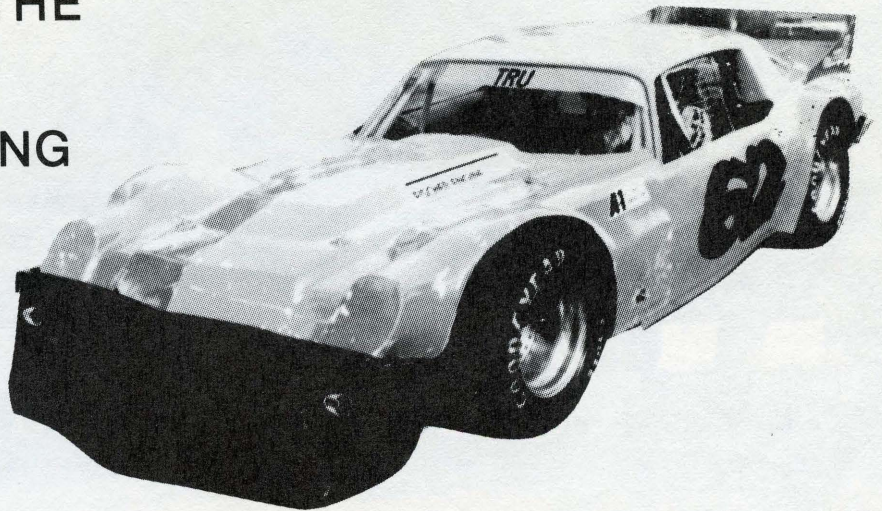
1st-20 2nd-15 3rd-10 4th-5

Main Events

1st-100 2nd-95 3rd-90 4th-85 5th-80 6th-75 7th-70 8th-65 9th-60 10th-55 11th-50 12th-45
13th-40 14th-35 15th-30 16th-25 17th-20 18th-15 19th-10 20th on-5

DTS Diversified Turbo Sales

SPECIALIZING IN THE
COMPLETE
RE-MANUFACTURING
& OVERHAUL
OF
TURBO
CHARGERS



DTS Diversified Turbo Sales

12300 GLADSTONE AVENUE • SYLMAR, CALIFORNIA 91342

PHONE: (213) 365-9896

MILLER'S Auto Dismantling

983-1900

Serving the entire Valley since 1965

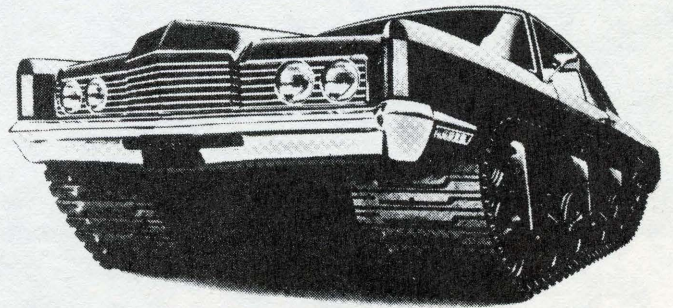
Free Hotline & Teletype Service
Throughout the Western States

USED AUTO PARTS - ALL MODELS
SPECIALIZING IN BUICKS

HONEST RELIABLE SERVICE

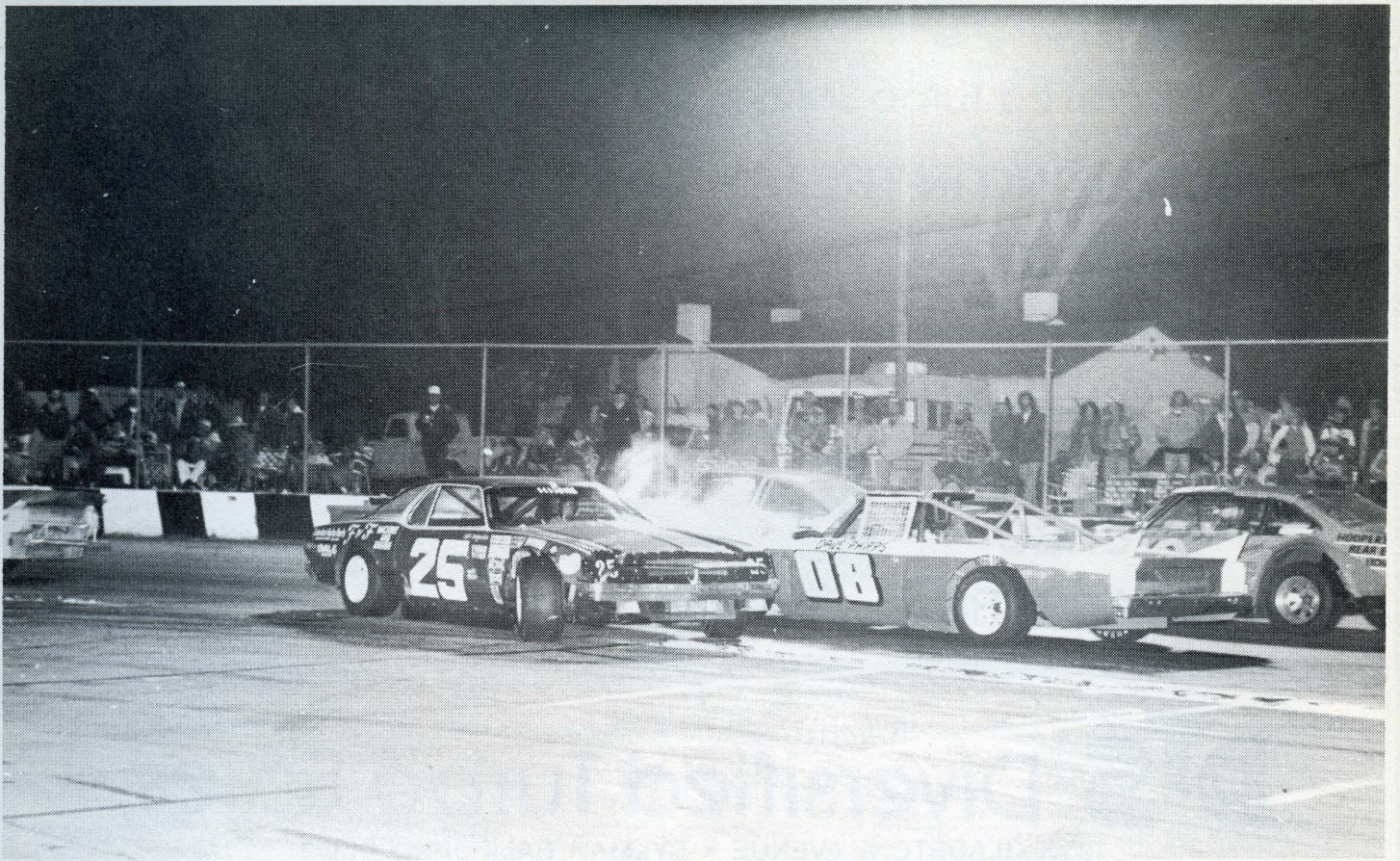
FREE SHOP DELIVERY

Member of Auto Dismantler's Association



We Rent, Buy & Sell
Destruction Derby Cars!

12055 BRANFORD ST. PACOIMA



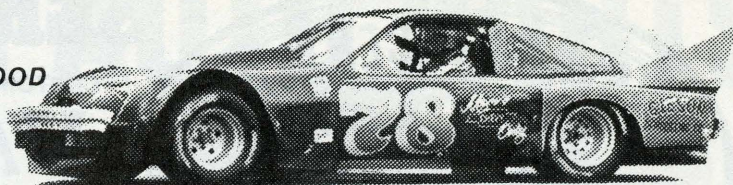
Opening night Sportsman action...Sedgwick (25), Phipps (08), Hooper (70) & Lyon (44).



Ruggles (96), Astone (07) & Phipps (08) in Sportsman main action.

JIM ROBINSON AUTOMOTIVE

6234 LANKERSHIM NORTH HOLLYWOOD



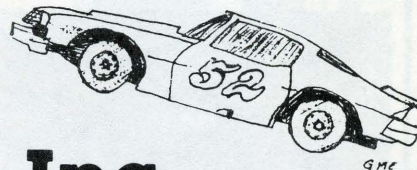
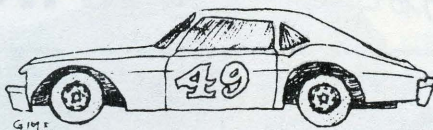
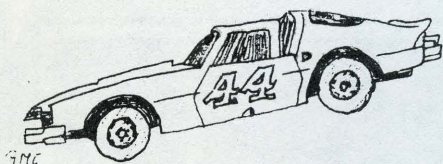
**ENGINES REBUILT
STOCK & RACING**

**FOREIGN-DOMESTIC
AUTO/TRUCK
REPAIR**

**AIR CONDITIONING
BRAKES
ELECTRONIC TUNE**

766-2233

JIM ROBINSON



Evarts Carpets, Inc.

1285 SOUTH COMMERCIAL AVENUE

OXNARD, CA. 93030

(805) 486-7391

Contractors License No. 210913

Serving Ventura County Since 1946

CELEBRATING 20 YEARS' RACING AT SAUGUS SPEEDWAY!

We wish to express
our gratitude to:

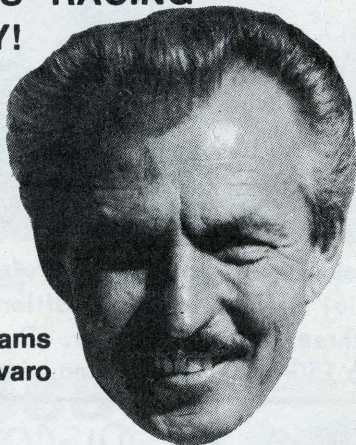
- ★ **Race Fans** for friendship
& enthusiasm over the years,
- ★ **Customers** for supporting
our racing efforts,
and

Our Championship Pit Crew:

- ★ **Dave Rodriguez** ★ **Steve Adams**
- ★ **John Aitken** ★ **Daryn Favaro**

THEY MADE THE DIFFERENCE

IN 1981



TRU CHEEK'S FATIGURATOR 62

FOOD SUPPLEMENTS

Put the **FATIGURATOR DIFFERENCE**
in Your Life for about 70¢ a day.

Try Before You Buy
Let Your **BODY** Decide !

Please Call:
Canyon Country (805) 252-2070
Simi Valley (805) 583-2217
S. F. Valley (213) 342-6593

WE DELIVER

Let's Go Karting

**From Novice to Expert...
We Have It All!**



RACING THAT EVERYONE CAN AFFORD

MINI-BIKES FROM \$299
FUN KARTS FROM \$369
RACING KARTS FROM \$695

**SALES & SERVICE
NEW & USED**

Pitts PERFORMANCE, INC.

SEE CHUCK PITTENGER

7141 WOODLEY AVE.
VAN NUYS, CA 91406
(213) 780-2184

SIG ERSON CAMS

WEIAND

PETE JACKSON GEAR DRIVES

Milodon



SERVICE CENTER

CUSTOM AUTO PARTS and SPEED EQUIPMENT

VAN NUYS

6429 SEPULVEDA BLVD.

VAN NUYS, CALIF. 91401

PHONE... 787-2810 or 873-3150



Hex-a-lite

CLOYES

QUICK LUBRICATION

ROTO METER

VHTD

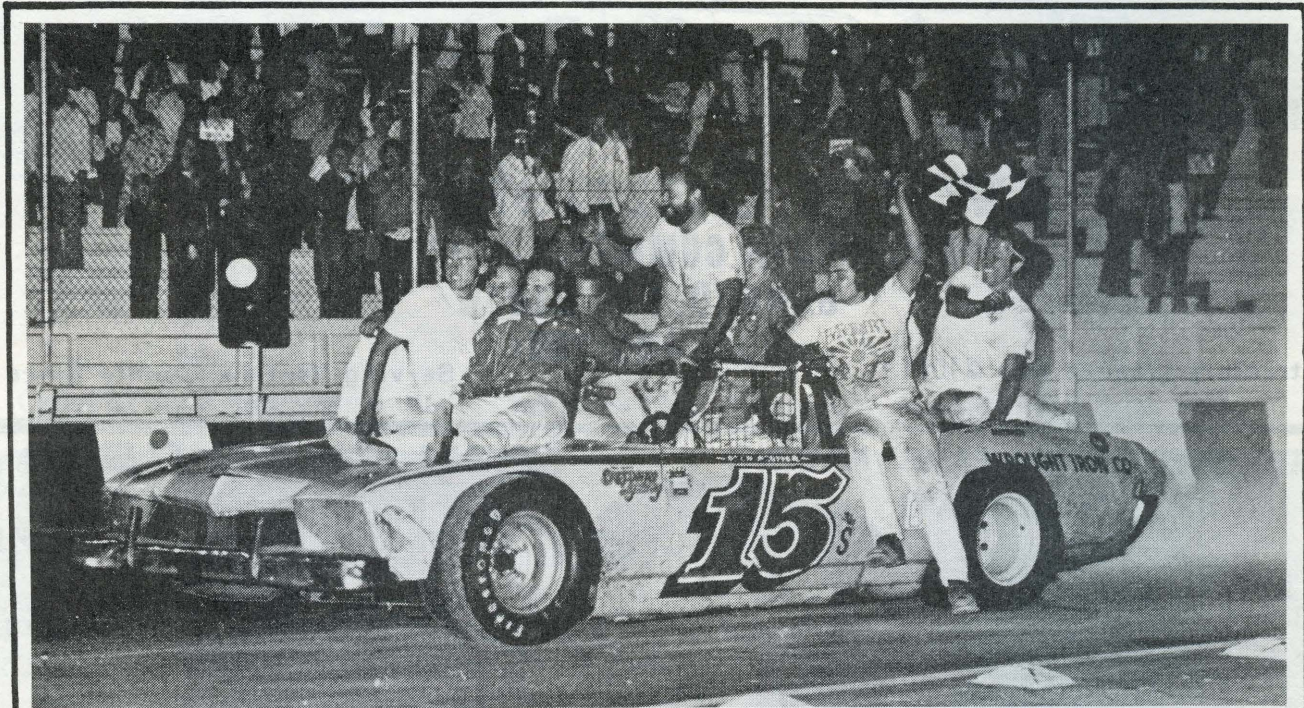
GREED PRO

SIMPSON

RUSSELL

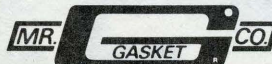
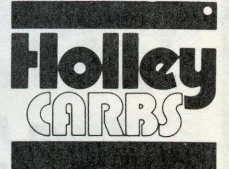
MON. to FRI. 9 to 6 SAT. 9 to 4

"Page from the Past"



The year is 1975 and car owner Don Johnson and crew join in "victory" lap after Oren Prosser won the first Saugus "330". That initial fall classic, the traditional season-ending race, was a 330-lap main event. It was run in three 110-lap segments. The format of the "330" has changed over the years and it is now a 150-lap event with no mid-point pit stop.

We Sell MOST MAJOR BRANDS AT DISCOUNT PRICES
 COME'ON BY... JOIN OUR DISCOUNT CLUB & MONTHLY MAILER NOW

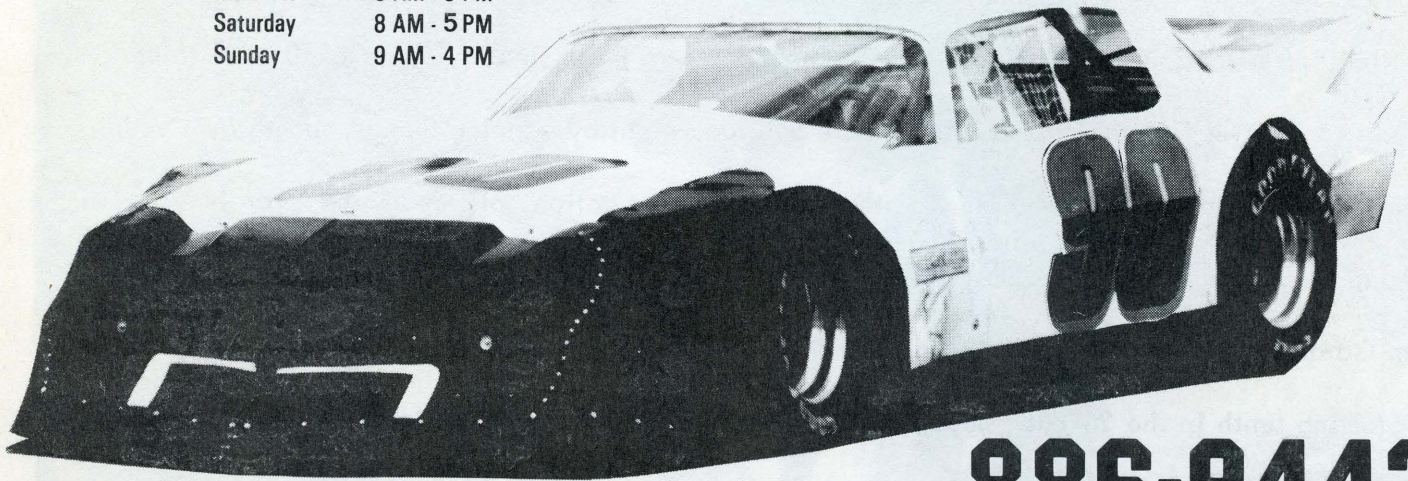


We Sell & Service NITROUS OXIDE * We HAVE LAY-A-WAY *

ERICKSON AUTO PARTS

OPEN 7 DAYS

Mon - Fri 8 AM - 9 PM
Saturday 8 AM - 5 PM
Sunday 9 AM - 4 PM



MACHINE SHOP SERVICE AVAILABLE

886-9442

7245 CORBIN AVE.,

CANOGA PARK

SIERRA

MOLD AND ENGINEERING CORP.

PROTOTYPE WORK

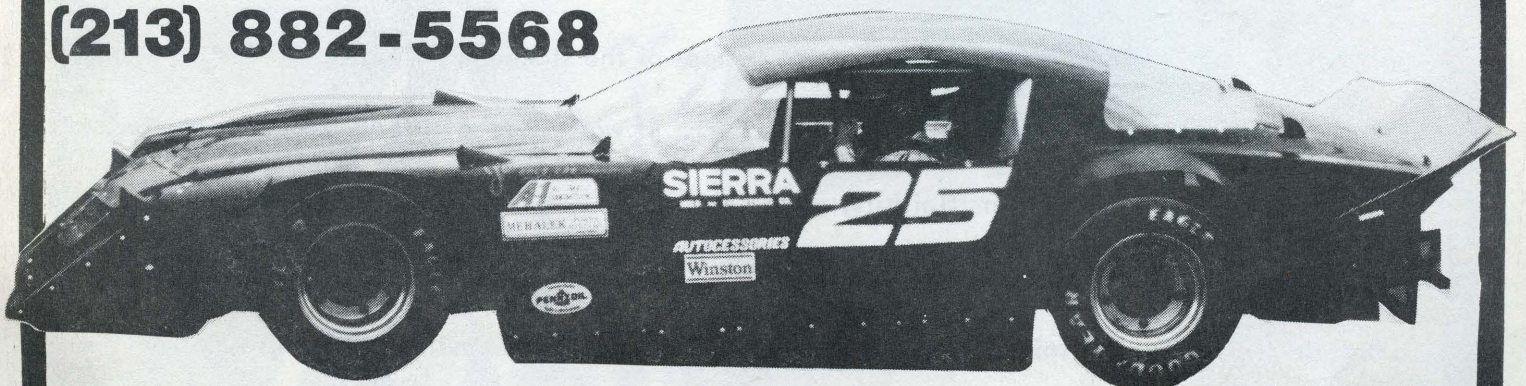
TOOLING

CNC MACHINING

WAX INJECTION MOLDS

PRECISION MACHINING

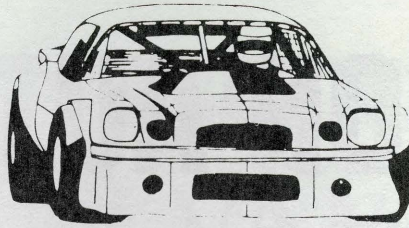
(213) 882-5568



9907 Canoga Ave. Unit N, Chatsworth

There is no compromise for quality

SUPER TRACK SCENE



by LYN PHERIGO

"DAN PRESS VICTORIOUS IN SAUGUS SEASON OPENER"

Nineteen seventy eight Saugus Speedway champion Dan Press, inactive most of '81 due to crash-sustained injuries, began 1982 on a high note Saturday night by winning Saugus Speedway's opening night 40-lap Modified main event. In other season-opener action, Bill Sedgwick, Van Nuys, won the 30-lap Sportsman main, Dave Harrison, Sylmar, was victorious in the 25-lap stocker oval event and Jim Gardella, Valencia, prevailed in the 15-lap figure eight finale.

Starting tenth in the 25-car line-up, Press moved up to fifth by the 20-lap half-way point and took over the lead from Loren Spangler, Northridge, on the 25th circuit. Spangler had held the lead from lap 15 and Steve Parrish, Santa Monica, was the pacesetter for the first 14 tours of Saugus Speedway's flat, third-mile, paved oval.

Spangler finished second with Canyon Country's Harry Brady, third, Ken Davis, West Covina, fourth, Bruce Erickson, Reseda, fifth and Tom Finneran of Rialto in sixth. They all finished on the lead lap.

Sedgwick took the lead on lap seven in his Sportsman victory and at that point it was Jimmy Menz, Reseda, running second, Dave Phipps, Reseda, third, Bob Lyon, Newhall, fourth and Brad Miller, Newhall in fifth. Twenty three laps later, when the checkered flag dropped, they were still battling in the same order and the only cars on the lead lap.

Sam LaFata, North Hollywood, led the initial 12 laps of the stocker oval main from his pole-starting position before Harrison took over in his winning effort. It was a typical, very-competitive stocker main with fifteen of the 24 starters finishing on the lead lap. John Redmond, Saugus, finished second ahead of Ronald Main, Chatsworth and Dennis Dyer, Acton.

Gardella led all but the initial two laps in winning the figure eight main. Ken Bosse, Sylmar was second, Bill McKnight, Northridge, third, Harrison, fourth and David Hard was fifth. Seven of the eleven finishers were on the winner's lap.



Trophy queen Rayna, Miss K-FOX Radio, and Sportsman dash winner Bill Sedgwick.

NKS

TRUCK
-
AND EQUIPMENT RENTAL
G

(213) 768-7855

AND EQUIPMENT RENTAL



SOLEDAD AUTO PARTS

&

Rearend Supply

MACHINE
SHOP
SERVICE

BUSINESS HOURS

Mon-Sat 8 to 8

Sunday 9 to 5

18236 SOLEDAD CYN. RD.
CANYON COUNTRY, CA. 91351

(805) 252-9341

Cabinet Specialties

(213) 353-1581

Modified

No.	Time	Driver	Make	Owner	No.	Time	Driver	Make	Owner
1		DARYL KRATZ, Saugus	Camaro	Daryl Kratz	55				
2		CARL LUX, Cyn. Ctry.	Camaro	Carl Lux	56				
3		HARRY BRADY, Cyn. Ctry.	Nova	Debbie Brady	57				
4		CHRIS CAMPANELLA, Sepulv.	Nova	Bob Campanella	58				
5		KEN BOSSE, Santa Barbara	Camaro	Chuck Phillips	59				
6		DAVE SHEARMAN, Cyn. Ctry.	Camaro	Alfred Shearman	60				
7		JOHN JULIS, Torrance	Corvette	Larry Herborn	61		SAM PRICE, Sun Valley	Nova	Price Bros. Racing
8			Camaro	Precision Instrument	62		TRU CHEEK, Sylmar	Camaro	Tru Cheek
9		BRAD ANDERSON, Burbank	Camaro	Robert Gober	63				
10					64				
11		DAN O'DONNELL, Reseda	Camaro	Daniel J. O'Donnell	65		L.S. DUNAGAN, Palmdale	Mustang	L.S. Dunagan
12					66				
13					67				
14		DICK KRANZLER, Simi	Chev.	Dick Kranzler	68				
15		OREN PROSSER, Simi	Camaro	Johnson-Leon Racing	69				
16					70				
17		LARRY GERCHMAN, Duarte	Camaro	Larry Gerchman	71			Camaro	Pearly Ent.
18		SONNY HARMS, Yucaipa	Camaro	Clifford Harms, Jr.	72		DON DAUGHERTY, Simi	Camaro	Donald Daugherty
19					73		GARY CHEEK, Saugus	Buick	Debbie Wirsching
20					74				
21					75				
22					76				
23					77		JOE RUGGLES, Valencia	Buick	Robin Ruggles
24		CHUCK BERRY, WdInd. Hls.	Ford	Bob Runnfeldt	78		JIM ROBINSON, Sylmar	Monza	Oval 3 Ent.
25		DAN PRESS, Newhall	Camaro	P.D.Q. Racing	79		KENNY SAPPER, La Crescenta	Camaro	Bernard Hilber
26					80				
27		BRYAN BROWN, Bakersfield	Camaro	Bryan Brown	81				
28		HILTON VAIL, El Cajon	Camaro	Lynette Vail	82		BOB BINNS, Encino	Buick	R.K Binns
29		ROMAN CALCZYNSKI, Sepulv.	Camaro	Joseph Calagna	83				
30		GARY JOHNSON, Valencia	Camaro	Gary Johnson	84				
31					85				
32					86				
33		M.K. KANKE, Granada Hls.	Camaro	M.K. Kanke	87				
34					88		JIM KENT, Saugus	Nova	Jim Kent
35		TOM FULLER, N. Holly.	Camaro	Fuller Racing	89				
36					90		BRUCE ERICKSON, Reseda	Camaro	Bruce Erickson
37		LOREN SPANGLER, Northridge	Corvette	L & L Spangler	91		BRUCE ERICKSON, Reseda	Camaro	Jim Erickson
38					92		LANCE DARLINGTON, Saugus	Nova	Glen Darlington
39		HANS WESSKI, Simi	Camaro	Hans J. Wesski	93		CHARLIE SAIED, N. Holly.	Firebird	CMJ Racing
40					94		VAUGHN VONDERA, Reseda	AMC	Vaughn Vondera
41					95				
42		TIM MITCHELL, Tujunga	Pont.	Tim Mitchell	96				
43					97		RON HORNADAY JR., Cyn.Ctry.	T-Bird	H & S Racing
44		GREG SCATES, Newhall	Camaro	Greg Scates	98		DAN HORNADAY, Simi	Camaro	H & S Racing
45					99				
46		HARRY BRADY, Cyn. Ctry.	Camaro	William Lindner	100				
47					0				
48					00				
49					01		GREG SCHEIDECKER, HighInd	Camaro	Hugh H. Knutson
50		KEN DAVIS, W. Covina	Plymouth	Carol Davis	02		MAL BORDERS, Tujunga	Mirada	MB Racing
51		ROBERT SWITZER, Chats.	Camaro	Robert Switzer	04		STEVE PARRISH, Sta. Monica	Nova	Bee Line Alignment
52					09		ROMAN CALCZYNSKI, Sepulv.	Chev.	Jones-Ski Racing
53					09x		RANDY MATTHEWS, Cucmga.	Dodge	Randy Matthews
54									

Kentucky Fried Chicken.

\$1.00 Off any 9, 12 or 15 piece dinners
To Saugus Speedway Race Fans

NEWHALL
23812 Lyons Ave.

SAUGUS
19307 Soledad Cnyn Rd.

Good only on Race Day



Norris Performance Products

14762 Calvert St. / Van Nuys, CA 91411
213 780-1102 873-4846

RACING CAMS & RACING PRODUCTS

Saturday Night at Saugus

THE TRACK.....

"Hey, it's flat", that's the exclamation you're most likely to hear from someone, especially if that someone's a driver seeing Saugus Speedway's very flat, one-third mile paved oval for the very first time. There's not another similar racing facility like it anywhere and its history is long and colorful.

RACING PROGRAM WARM-UPS.....

The first activity on the track is practice or "hot-lapping" as it is known to the racing fraternity. While not an official event it's a very important part in the makeup of a race-night at the "Super Track". You'll notice that many of the cars will run a few laps then go to the pits, the "garage" area of the speedway, return to run more laps and they may continue this pattern for some time. They are "fine tuning" all the components to the track and the conditions that exist for that particular night. Some adjustments may be minor, however, sometimes major corrections, including the changing of a complete engine will take place in this practice time slot, and it's all very necessary in preparation for the competitive action later in the program.

QUALIFICATIONS.....

The formal part of almost every racing program begins with the time trials (qualifications). Each car usually receives two chances to "race the clock" and the faster of the two timed laps will be the official qualifying time. Starting positions in the heat and feature races are determined by the time recorded during these laps.

THE LINE-UP.....

All races here at Saugus are generally run from an "inverted" start with the slowest car in the number one or "pole" position and the faster qualified cars to the rear in the order of their qualifying times. Open-comp events such as the just-completed Saugus Spring Open and the season-ending "330" feature "straight-up" starts with the fastest cars in front. In inverted starts watch the faster cars work their way through the pack of slower cars for this is the ingredient that makes "short-track" racing the great spectator sport that it is.

TROPHY DASH.....

The trophy dash or "fast car dash" is for the four fastest qualifiers in each division and they race for four laps to determine a winner. In open-comp events it is usually the six fastest cars going six laps and they start in inverted order also.

HEAT RACES.....

The most closely competitive cars, those with similar qualifying times, are pitted against one another in these short races of 8-laps duration. At Saugus the 24 fastest qualifiers are divided into two groups. The 13th thru 24th qualifiers go to the line in the first heat race and the twelve fastest compete in the second heat race, sometimes called the "fast" heat race. Participation in these preliminary events allows drivers and crews to size up the competition before the feature events and to make changes in equipment or "strategy".

SEMI-MAIN EVENTS.....

Special "consolation" events for those cars not qualifying fast enough to make the 24-car starting line-up are called semi-mains. It gives those drivers a chance to experience competitive driving and for many it is their first time in a "door-handle to door-handle" race.

MAIN EVENTS.....

The feature events and the longest on the night's racing program. The Street Stocks lead off with their customary 25-lap "running gun battle", then it's those spirited Sportsman for a 30-lap show-down. When the Modifieds aren't scheduled, the Sportsman main is a 40-lap affair.

The Modifieds, the premier racing machines at Saugus take to the asphalt next for their 40-lap feature event of the evening. It is a sight to behold when 24 fast, roaring Modifieds charge out of turn four and take the starter's green flag and the beginning of forty laps of short-track racing at its best.

After the oval stockers, the Sportsman and the Modifieds have finished, then, and only then the infield is cleared and the "wild and wooly" figure-eighters take over for 15-laps of criss-cross madness. You can't believe the near-misses and the excitement created by the thirty trips through the intersection by each car. The maneuvering and control as these expert drivers weave their way through the "X" will keep you on your feet most of the time and the memories of their daring will remain long after tonight's action is over.

That's what a night's racing is all about here at the "Super Track", that is, unless it's the last Saturday of the month, because on the last Saturday of each month we have a special added attraction.

GIANT DESTRUCTION DERBY.....

Picture, if you can, forty to eighty D/D (derby demolition) cars lined up awaiting the starting signal, then crashing and banging into each other until there's a winner, the only one still able to move under its own power.

Well, there you have it. What Saturday night at Saugus Speedway is all about. There's really another part to this story, that's about the fans of Saugus Speedway and we'll save it for later. It's a long story, cause Saugus fans are the greatest.....

Lyn Pherigo

Sportsman

No.	Time	Driver	Make	Owner	No.	Time	Driver	Make	Owner
1		MARK PERRY, Sylmar	Camaro	Perry Engineering	56		JIM McLAUGHLIN, Sun Val.	Chevelle	James McLaughlin
2		MIKE HINDMAN, Cyn.Ctry.	Buick	Michael Hindman	57		STEVE STAPLES, Newhall	Chevelle	Steve Staples
3		M.K. KANKE, Gran. Hls.	Camaro	M.K. Kanke	58				
4		JOSEPH LeFEBRE,		Joseph LeFebure	59				
5					60				
6		DAVE SHEARMAN, Cyn. Ctry.	Camaro	Alfred Shearman	61				
7		JOE STEWART, Chatsworth	Pontiac	Joe Stewart	62				
8		BILL SPEARS, Gran. Hls.	Chevelle	Melanie Spears	63				
9		GEORGE JENKINS, Tujunga	Camaro	George Jenkins	64				
10		CLIFF BELL, Simi	Pontiac	Clifford Bell	65				
11		DAN ROSS, Duarte	Camaro	Joseph Schowen	66				
12		GREG HOEFELMAN, Sylmar	Mercury	M.J. Gregg Racing	67		DEAN LEONARD, Sun Val.	Dodge	Sheldon Auto Salvage
13					68				
14		KEVIN McCURDY, Ventura	Chev.	Chuck Smith	69				
15					70		RAY HOOPER JR., Valencia	Pontiac	Ray Hooper Sr.
15		PAUL ANGELOTTI, Ventura	Chevelle	Paul Angelotti	71		L.A. WOODSIDE, Saugus	Camaro	Woodan Racing
16		JOHN LUX, Thous. Oaks	Buick	R.J. Lux Racing	72		BARBARA DOWNS, Pacoima	Dodge	Barbara Downs
17		LARRY WARHOLIC, N. Holly.	Camaro	Sharon Warholic	73				
18		ED OSTROM, Bellflower	Plymouth	Edward Ostrom	74		STEVEN PHILLIPS, Camarillo	Plymouth	Diane Hoffman
19					75				
20					76		JIMMY MENZI, Reseda	Olds	James Menzie
21		RUSTY PARR, Newhall	Chevelle	Pat Parr	77		BUD BYRNES, Miss.Hls.	Mustang	Ralph Byrnes
22					78		TRENT PALMER, Altadena	Ford	V. Dale Palmer
23		CINDY DAVAR, Sepulveda	Pontiac	Dr. W.S. Sibson	79		KEN SAPPER, LaCrescenta	Chev.	Durrant Bros. Racing
24		STEVE MASON, Sylmar	Camaro	Steve Mason	80				
25		BILL SEDGWICK, Van Nuys	Chev.	F & F Automotive	81				
26					82		RICK HEIKKINEN, Newhall	Camaro	K.B. Automotive
27		EMANUEL JERALOU, Wd.Hls.	Plymouth	Steve Huth	83				
28					84				
29					85				
30					86				
31					87				
32					88		JIM KENT, Saugus	Nova	Jim Kent
33		BOB BOGAARD, Cyn.Ctry.	Chevelle	Jean Bogaard	89				
34					90				
35					91				
36		JACK LONG JR., Cyn.Ctry.	Chev.	Georgetta Long	92		GENE CALLAHAN, Simi	Chev.	Gene's Chain Saw
37					93				
38					94		JOE RUGGLES JR., Valencia	Chevelle	JPR Development
39		JIM SMELSER, Arleta	Ford	James R. Smelser	97		BILL McKNIGHT, Northridge	Ford	Char Creek
40					98				
41					99		RON DAVIS, Simi	Camaro	Ronald Davis
42					100				
43					03		KYLE FUCHS, Van Nuys	Chevelle	Marilyn Fuchs
44		BOB LYON, Newhall	Nova	Lyon Racing	07		JOE ASTONE, San Fern.	Chev.	Jennifer Astone
45		BRAD MILLER, Sylmar	Pontiac	James Christopher	08		DAVE PHIPPS, Reseda	Chevelle	David Phipps
46					09		ROMAN CALCZYNSKI, Reseda	Pontiac	PFC Welding
47		CHARLIE WAGONER, Sylmar	Buick	C.M. Wagoner	113		CHUCK BERRY, Wd.Hls.	Camaro	Chuck Berry's Paint & Body
48					151		CHRIS PEEDAN, Newhall	Chev.	Keith Holder
49									
50									
51		GABBY GARRISON, Long Bea.	Dodge	V.C. Garrison					
52		KIRK ROCKWELL, Lake.Ter.	Ford	Kirk Rockwell					
53									
54									
55		BOB KINDOLL, Cyn.Ctry.	Nova	M.A. DiMarzo					

213-361-7601

Walt Price's
EMPIRE AUTOMOTIVE SERVICE

ROLL BARS - TUBE BENDING - HEADERS
DUAL EXHAUSTS - ENGINE CONVERSIONS
BRAKES - SHOCKS - TUNE UP

455 N. MACLAY AVE., SAN FERNANDO, CA 91340



FIBERGLASS
Resins & Supplies

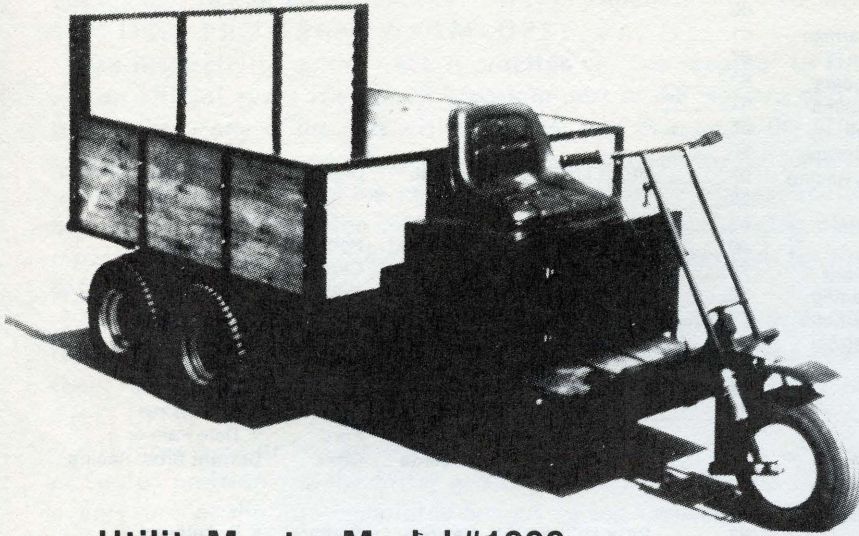
PLEXI GLASS
Sheet & Rod Stock

Lexan Cut To Your Pattern

N. Hollywood Costa Mesa Woodland Hls.
(213) 766-9491 (714) 556-0900 (213) 884-5650

Yes, We're Open On Saturday!

Spangler Manufacturing Co.



UtilityMaster Model #1000
bed size 54 x 54

4 - WHEEL DRIVE UTILITY MASTER

- ★ 1000 lb. payloads
- ★ electric start
- ★ 8½ hp. 4 cycle engine
- ★ automatic clutch
- ★ forward & reverse transmission

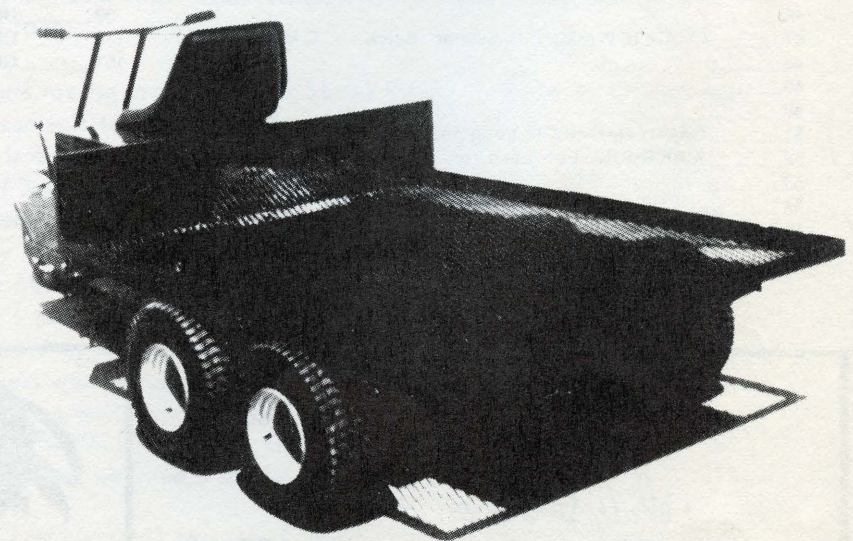
NATIONALLY DISTRIBUTED BY

contempo enterprises

11611 Cantara St., North Hollywood, CA 91605 • (213) 768-2800

Options

- ★ 3 different bed styles available
- ★ optional hydraulic dump
- ★ propane conversion available



UtilityMaster Model #1000-3
bed size 54 x 65

for Free Brochure See Loren Spangler In The Pits, Modified #37.

Street Stock

No.	Time	Driver	Make	Owner	No.	Time	Driver	Make	Owner
1		RANDY PARR, Newhall	Chev.	Randy Parr	71		PAMM WOODSIDE, Saugus	Chevelle	Woodan Racing
2		STEVE LEE, Cyn.Ctry.	Chevelle	Steve Lee	72		GREGORY AUSTIN, Burbank	Ford	Gregory Austin
3		DAVE DUNLAP, Cyn.Ctry.	Chevelle	Dave Dunlap	73				
4		WILLIAM CONVERSE, L.A.	Chevelle	William Converse	74		TERRY JOHNSON, Van Nuys	Chevelle	Kimberly Johnson
5		STEVE DEAVER, Sun Val.	Chevelle	Steve Deaver	75		DAVE MOOD, Gran.Hls.	Chevelle	David Mood
6		MIKE BECKER, Saugus	Chevelle	Mike Becker	76		THOMAS KANE, Reseda	Chevelle	Thomas Kane
7		RICHARD KELLY, Northridge	Chevelle	Richard Kelly	77		SCOTT KLASSEN, Ventura	Chevelle	Chuck Smith
8					78		MIKE MURPHY,		Michael Murphy
9		BRIAN HAWKSLEY, Burbank	Chev.	Larry Glover	79			Chevelle	Canoga Rebar
10		KURT FLOREN, Glendale	Olds	Bruce Howell	80		DON BRIDGEMAN, Simi	Chevelle	D.A. Bridgeman
11		TOM KIMMEL, L.A.	Chevelle	Donald Kimmel	81		L.A. WOODSIDE, Saugus	Chevelle	Woodan Racing
12		DON HOEFELMAN, Sylmar	Chevelle	M.J. Gregg Racing	82				
13		SHELDON TOOMER, Cyn.Ctry.	Chevelle	Sheldon Toomer	83		TIM KERBRAT, Sylmar	Chevelle	Tina Zapata
14		KEVIN McCURDY, Ventura	Chevelle	Chuck Smith	84				
15		GREG SCATES, Newhall	Chevelle	V & S Racing	85		JOHN BOTSFORD, Long Bea.	Plymouth	John Botsford
16		BUTCH PFANKUCHEN, Simi	Buick	Theral Pfankuchen	86				
17					87		DAVID NACCARATO, T.O.	AMC	David Naccarato
18		DWIGHT KUYKENDALL, Sep.	Chevelle	Dwight Kuykendall	88		JIM KENT, Saugus	Chevelle	Jim Kent
19					89		MIKE BRYAN, Ventura	Dodge	Mike Bryan
20		CLIFF HALLIDAY, Littlerock	Chevelle	Cliff Halliday	90		RODNEY PEACHER, Sepulv.	Chev.	D.M. Taylor
21		MEL CHIKATO, La Crescenta	Chevelle	Mel's Head Service	91		CARL DOYON, Camarillo	Chevelle	DDT Ent.
22		JEFF PHILLIPS, Camarillo	Chevelle	Denny's Automotive	92				
23		DAVAR/SEDGWICK, Van Nuys	Chevelle	Dr. W.S. Sibson	93		BILLY GRIMES JR., Saugus	Chevelle	Billy Grimes Sr.
24		DAN VELS, Santa Paula	Chevelle	Outlaw Engineering	94		NELSON STANFORD, Glend.	Ford	Nelson Stanford
25		BILL SEDGWICK, Van Nuys	Chevelle	Bill Sedgwick	95				
26		JIM GARDELLA, Valencia	Chevelle	Gardella Bros. Racing	96		Retired in Honor of Bill Killian		
27					97		BILL McKNIGHT, Northridge	Chevelle	Wm. R. McKnight
28		RONALD VANDEPAS, Simi	T-Bird	Ronald Vandepas	98		JERRY HOEFELMAN, Sylmar	Chevelle	M.J. Gregg Racing
29		JEFF GRANDEL, Can. Pk.	Chevelle	Jeff Grandel	99		RANDY GRIFFITH, Sylmar	Chevelle	Randy Griffith
30					100		ART OSBORNE, Van Nuys	Chevelle	Arthur Osborne Jr.
31					0				
32		JOHN W.C. SCOTT, Sylmar	Ford	John W.C. Scott	00		JOHN ARTLIP, Miss.Hls.	Chevelle	John Artlip
33		M.K. KANKE, Gran.Hls.	Chevelle	M.K. Kanke	01		NICK ZANCOURIDIES, CanPk.	Plymouth	Nick Zancouridies
34		VICTOR NILL, Burbank	Pontiac	Victor Nill	02		ROLANDO SOTO, La Cres.	Plymouth	Auto Mechanika
35		ART McANULTY, Pt.Hueneme	Chevelle	Arthur McAnulty	03				
36		JACK LONG JR., Cyn.Ctry.	Chevelle	Georgetta Long	04		JERRY BOSSON, Can.Pk.	Chevelle	E.A. Jonasson
37		NEIL BURROW, Saugus	Chevelle	Neil Burrow	05		TERRY LEIDHOLDT, Cyn.Ctry.	Chevelle	Walter Snyder
38					06		FRED WOLGAMOTT, Sylmar	Chevelle	F & M Racing
39		JOHN REDMOND, Saugus	Chevelle	John Redmond	07		MIKE SCHOOLCRAFT, Simi	Chev.	F & M Racing
40					08		JOHN KIRBY, Ventura	Pont.	Wile Coyote Racing
41					09				
42		DENNIS DYER, Acton	Olds	Dyer Bros. Builders	101				
43		TERRY BRADEN, Simi	Ford	Terry Braden	102				
44					103				
45		DALE GARLITS, Van Nuys	Chevelle	Dale Garlits	104				
46					105		TIM FRANKLIN, Simi	Chevelle	Carole Franklin
47					106		BEN JONES, Simi	Olds	Ben Jones
48		JESSELL WHITE, Sunland	T-Bird	Jessell White	107				
49		DAVE ELLIS, Chatsworth	Chevelle	Dave Ellis	108		BILL ALVORD, Simi	Chevelle	C & B Racing
50		DANIEL LYTLE, Azusa	Chevelle	Quality Bearing Inc.	109				
51		BILL VARNEY, Azusa Pontiac	F. William Varney		110		DAVID THOMAS, Chats.	Chevelle	David Thomas
52		BRYAN HAYDEN, Cyn.Ctry.	Chevelle	Mark Hodges	111		RONALD MAIN, Chats.	Chevelle	Canoga Rebar
53		GERALD QUINN, Red.Bea.	Chevelle	Gerald Quinn	112				
54		DONALD ROGERS, Simi	Chevelle	Donald Rogers	113				
55		DUNCAN DARR, Ventura	Olds	Wile Coyote Racing	114		JAMES MacSORLEY, SunVal.	Chevelle	James MacSorley
56		JAMES McLAUGHLIN, SunVal.	Chevelle	Barbara McLaughlin	117		DAVID BRANDON, Reseda	Chevelle	Brandon Racing
57					126		PAT HERNANDEZ, CynCtry.	Chevelle	Gardella Bros. Racing
58		JOHN CRAN, Reseda	Chevelle	Robert Cran	131		CAROL McGONIGAL, Aq,Dulce	Chevelle	Frank McGonigal
59					133		M.K. KANKE, Gran.Hls.	Chevelle	Darrell Kanke
60		JIM GRULKY, Sylmar	Chevelle	Jim Grulkey	138		MIKE AYERS, Miss.Hls.	Chevelle	Michael Ayers
61		ROY ALYEA, Saugus	Chevelle	Roy Alyea	143		MITCHELL KLEIN, Simi	Ford	Mitchell Klein
62		WINSTON DAVENPORT, Paid.	Chevelle	Winston Davenport	155		DEDE HAYES, Sylmar	Cad.	Bill Nelson
63		WALT PRICE JR., Sylmar	Chevelle	Walter Price Jr.	160		DAVE HARRISON, Sylmar	Ford	Ron Rayburn
64					161		ALAN McCORD, Wd.Hls.	Buick	Alan McCord
65					169		SAM LaFATA, N.Holly	Chevelle	Sam LaFata
66		KEN SLATER, Sylmar	Buick	Brian Chatham					
67		SANDY GARCIA, Can.Pk.	Chevelle	Jeff Evans					
68		KEN JOHNSTON, Malibu	Chevelle	Ken Johnston					
69		DAN WILCOX, Newbury Pk.	Ford	Dan Wilcox					
70		JOE MASSIMINO, Simi	Chev.	Joe Massimino					

SAUGUS
SPEEDWAY

SWAP MEET

EVERY
SUNDAY

GATES OPEN 6:00 AM * BUYERS \$1.00 * SELLING SPACES \$15.00 & UP

Plenty of Free Parking . . . Or Park at College of the Canyons & Ride Free Shuttle Bus to Swap Meet

**BIG DISCOUNTS
ON ALL PARTS &
ACCESSORIES**

AUTO PARTS

We Stock Import & Domestic Auto/Truck Parts

CANYON AUTO SUPPLY

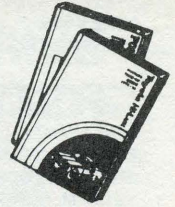


**AUTOMOTIVE
REFINISHING
PRODUCTS**

**AUTOMOTIVE
REPAIR
MANUALS**

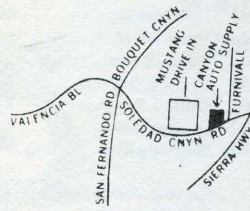


**CARS
TRUCKS
VANS**

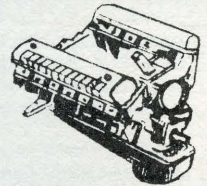


252-8011

OPEN 7 DAYS
Mon.-Fri. 8-7
Sat. 9-6
Sun. 9-5

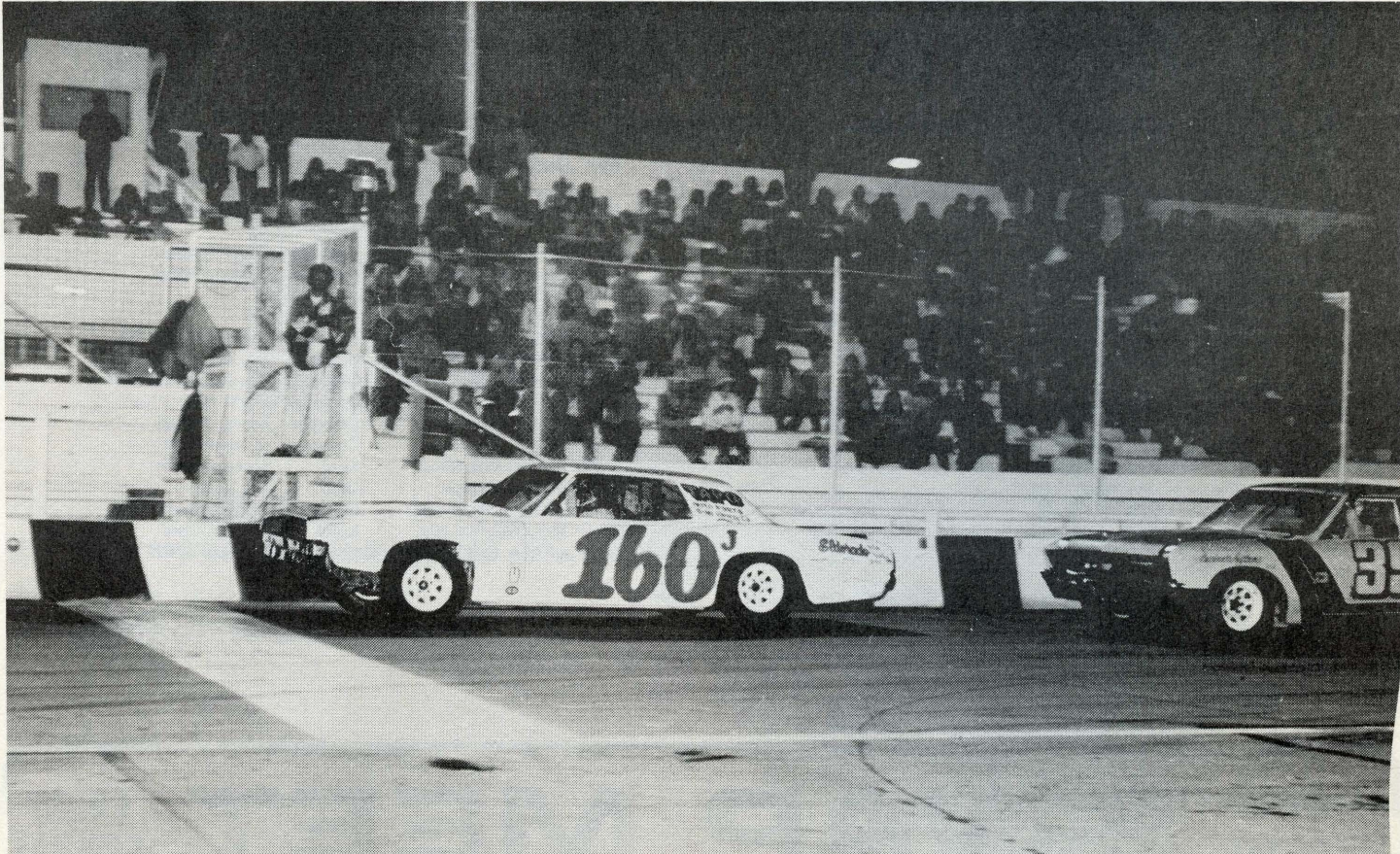


COMPLETE ENGINE REBUILDING
Short Blocks Valve Jobs
Crankshaft Grinding



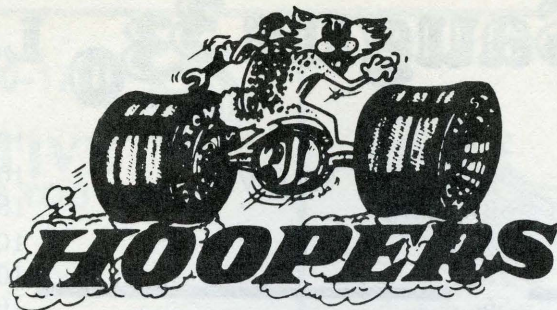
MACHINE SHOP

20541 SOLEDAD CANYON ROAD - CANYON COUNTRY



Dave Harrison wins opening night stocker oval main in Ron Rayburn's #160 T-bird.

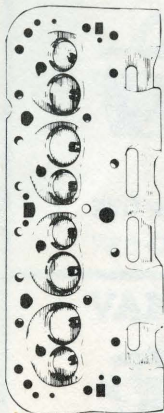
**HIGHWAY
OR
SPEEDWAY**



**CARS
TRUCKS
RACE CARS**

Rear End Exchange

1201 BRANFORD AVE. 899-2515 SUN VALLEY, CA.



MEL'S HEAD SERVICE

*specializing in complete
race-prepped cylinder heads*

Full line of stock car
racing parts and equipment

3754 Pontiac Street
La Crescenta, CA 91214

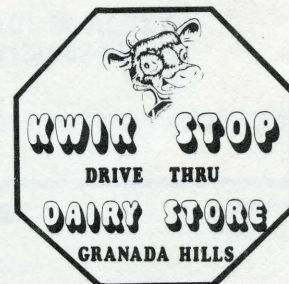
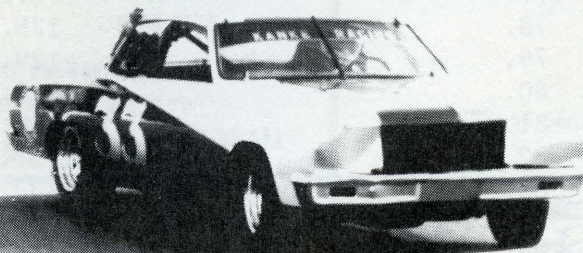
*"Top-Quality Work
at Affordable Prices"*

**Dealer for Brownfield
Aluminum Heads**

Call for brochure
(213) 248-5091

KWIK STOP

Chris & Mike Kanke
Owners



Visit our Video Game Room

368-7792

16940 Chatsworth St.

Granada Hills

SAUGUS
SPEEDWAY

1982

Season Pass

ADMITS TWO PEOPLE **ONLY \$235** GOOD ALL YEAR

INCLUDES PREFERRED INSIDE PARKING

NOW AVAILABLE CALL (805) 259-3886

Saves **\$113** over regular admission rates!

**California
Graphics**
offset printing

(805) 525-1600

1072 E. Main St., Santa Paula, Ca. 93060

8th Annual Saugus 330 Lap Sponsors

1.		51.		101.	
2.	RESERVED	52.	RESERVED	102.	RESERVED
3.		53.		103.	
4.		54.		104.	
5.		55.		105.	
6.		56.		106.	
7.		57.		107.	
8.		58.		108.	
9.		59.		109.	
10.		60.		110.	
11.		61.		111.	
12.		62.		112.	
13.		63.		113.	
14.		64.		114.	
15.		65.		115.	
16.		66.		116.	
17.		67.		117.	
18.		68.		118.	
19.		69.		119.	
20.		70.		120.	
21.		71.		121.	
22.		72.		122.	
23.		73.		123.	
24.	Dan Press	74.		124.	
25.		75.		125.	
26.		76.		126.	
27.		77.		127.	
28.		78.		128.	
29.		79.		129.	
30.		80.		130.	
31.		81.		131.	
32.		82.		132.	
33.		83.		133.	
34.		84.		134.	
35.		85.		135.	
36.		86.		136.	
37.		87.		137.	
38.	Jimmy Insolo	88.		138.	Soledad Auto Parts
39.		89.		139.	
40.		90.		140.	
41.		91.		141.	
42.		92.		142.	
43.		93.	Saied Construction Co.	143.	
44.		94.		144.	
45.		95.		145.	
46.		96.		146.	
47.		97.		147.	
48.	RESERVED	98.		148.	
49.		99.		149.	
50.		100.		150.	

Dan Press

Jimmy Insolo

Saied Construction Co.

892-0773
Barrington
 CUSTOM ENGINES
Don Barrington
 9002 SEPULVEDA BLVD SEPULVEDA, CA

Steve Colbert

FIRST \$10.00
 SECOND \$6.00
 THIRD \$4.00
 FOURTH \$3.00
 FIFTH \$2.00

LAP MONEY
\$25 per lap \$25
"A" MAIN

780-1770



KB AUTOMOTIVE
FULL SERVICE NO JOB TOO SMALL
COMPLETE AIR CONDITIONING

KEN

14106 Burbank Blvd.
Van Nuys, Calif. 91401

FOREIGN
DOMESTIC

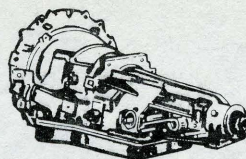
JERRY'S AUTOMATIC

TRANSMISSIONS

REPAIRED ■ REBUILT ■ EXCHANGED

CALL 24 HOURS

252-7200



"OUR BEST AD IS A SATISFIED CUSTOMER"

20501 SOLEDAD CANYON ROAD CANYON COUNTRY

WE BUY, SELL & BUILD RACE CARS!

FIGURE 8 ■ STREET STOCK ■ SPORTSMAN ■ MODIFIED



CHUCK OWEN
RACING

760-2424

760-0224

NORTH HOLLYWOOD, CA.

805/527-5200

STOP LITE BRAKE & ALIGNMENT



BRAKES SHOCKS
BALANCING
WHEEL ALIGNMENT
FRONT END WORK

392 EASY STREET, NO. D
Simi Valley, Calif. 93065

RON RAYBURN
Owner

VANGUS & WESTERN STATES TROPHY CO.



TROPHIES PLAQUES
MEDALS RIBBONS
NAME TAGS DESK SETS

EXPERT ENGRAVING

SUPPLIER OF SAUGUS SPEEDWAY TROPHIES

24270 SAN FERNANDO RD.

259-3322
259-8878

NEWHALL

ALTERNATORS — ELECTRICAL REPAIR — STARTERS
FOREIGN — DOMESTIC — CARS — TRUCKS — DIESEL
Hi-torque racing starters available

ALTERNATOR SUPPLY & RESEARCH

PAUL M. ALEXY
(213) 982-2878

11836 VOSE STREET • NO. HOLLYWOOD, CA 91605

Stunt Cars

Race Cars

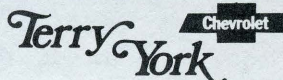
Stormin' Norman & Co.

Motion Picture and Television
Stuntman

- Roll Cages
- Suspension
- Steering
- Alignment
- Brakes
- Chassis Modifications

7754 Deering
Canoga Park

(213) 999-1982



RON RAMSAY
Parts Department

Hi Performance & Collision Parts

(213) 501-2165

(213) 783-8300



GENERAL MOTORS PARTS DIVISION

16425 Ventura Blvd.

WE DELIVER

Encino, CA 91436

BILL'S
MUFFLER

& FOSTER'S
AUTO
ACCESSORIES

259-4150



24125 Railroad Ave Newhall

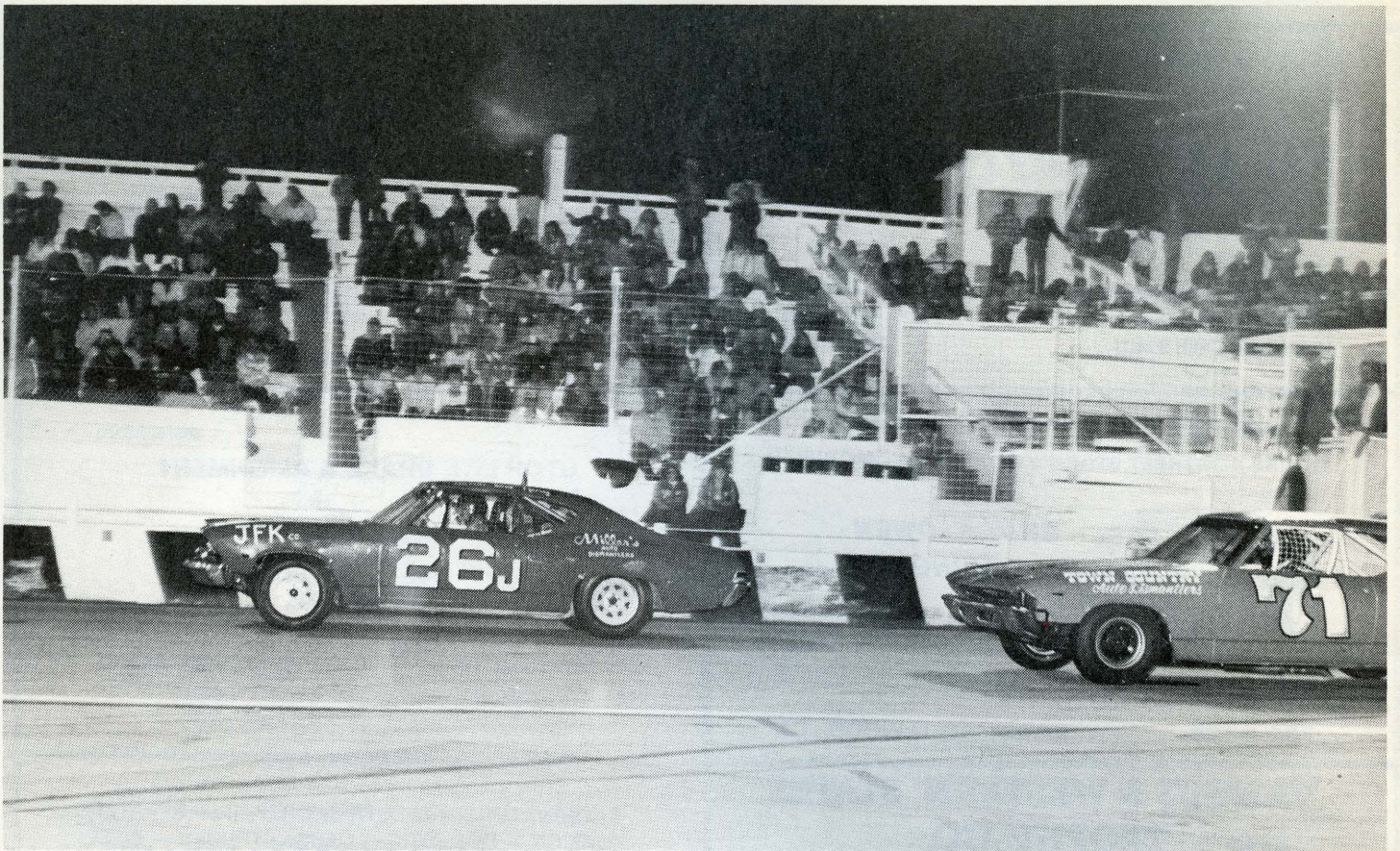


Don Johnson
Owner

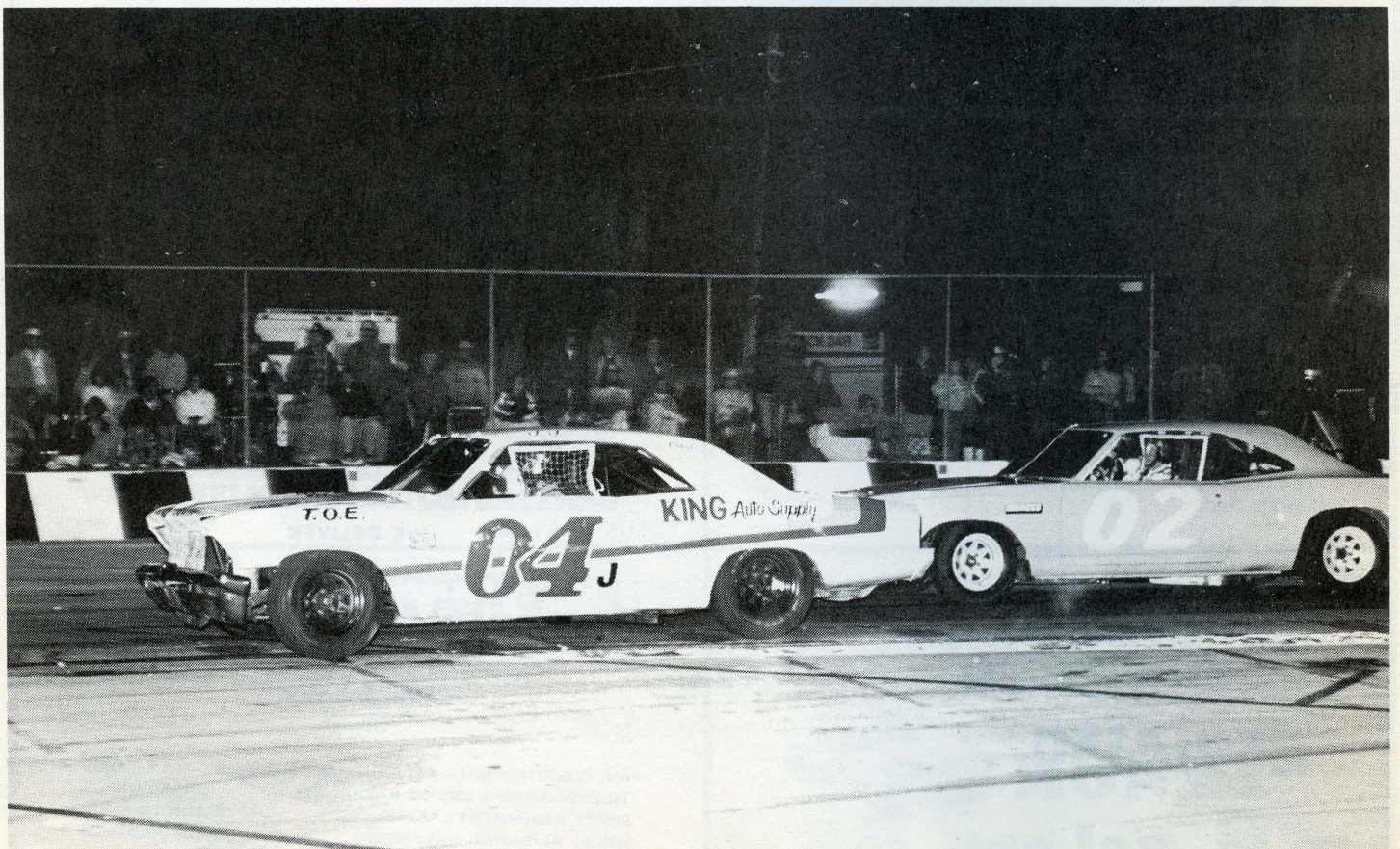
AIR CONDITIONING — REPAIRS — ALL MAKES
TRANSMISSION & ENGINE EXCHANGE
SHOCK ABSORBERS & MUFFLERS
WHEEL ALIGNING - BALANCING

BRAKES
VALVE GRIND
MOTOR TUNE-UP
CUSTOM LUBRICATION

11479 BURBANK BLVD., NORTH HOLLYWOOD 91601 POplar 6-6151



Jim Gardella (26) & Pamm Woodside (71), opening night stocker action.



Jerry Bosson (04) & Rolando Soto (02) through the turns of Saugus Speedway.

FALCONER & SON'S

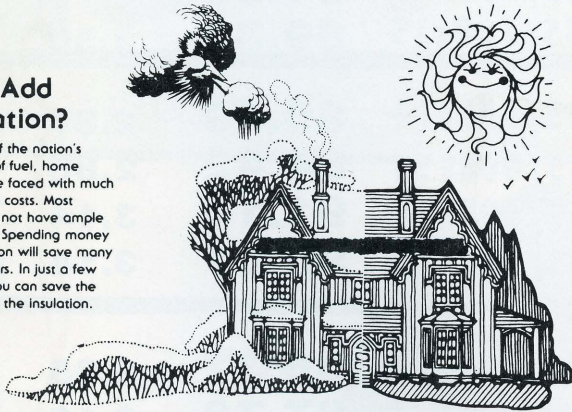
21500 Blythe Street Canoga Park

Phone (213) 888-3400

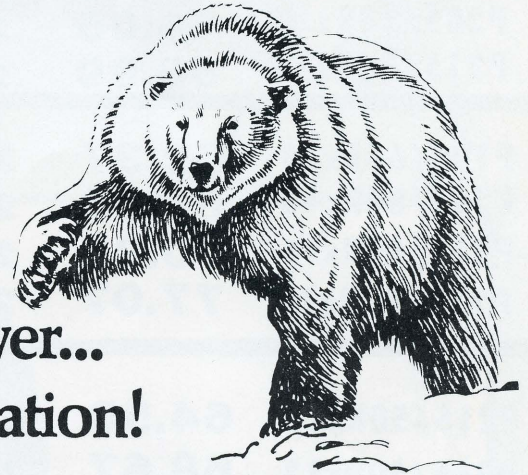
INSULATION & SOUND CONTROL

Why Add Insulation?

Because of the nation's shortage of fuel, home owners are faced with much higher fuel costs. Most homes do not have ample insulation. Spending money for insulation will save many fuel dollars. In just a few years you can save the cost of the insulation.



Polar Bears Have the Answer...
Insulation!



CAN YOU AFFORD NOT TO INSULATE NOW ?

1. IT WILL COST MORE LATER BECAUSE OF:

Increasing energy costs
Increasing cost of insulation
Rising inflation

2. WHY INSULATE:

Keeps heat in
Keeps cold out
Reduces drafts

Why pay to heat or cool the Great Outdoors?

3. HOW DOES YOUR HOME MEASURE UP?

FREE INSPECTION!

4. ENERGY RATE TWICE INFLATION!

Every year you wait could cost you:
10% Inflation +
25% Increased energy cost
= 35% MORE!

5. 40% STATE INCOME TAX CREDIT

For residential installation of qualified conservation measures — including attic insulation (\$1500.00 maximum). Ask your tax consultant.

6. 15% FEDERAL INCOME TAX CREDIT

Unless you have already used your energy tax credit (up to \$300).

7. FINANCING*

Master Card — Visa — or, if your purchase qualifies for the Gas Co. special low cost financing at

8%

*Subject to So. Cal. Gas Co. program requirements.

**Savings vary: find out why in the Seller's Fact Sheet on R Values. Higher R Values mean greater insulating power.

THIS COUPON GOOD FOR \$100 DISCOUNT ON BLOWN INSULATION
(ONE COUPON PER JOB)

FALCONER & SONS

21500 BLYTHE ST.

CANOGA PARK

PHONE (213) 888-3400

LICENSE NO. 386814

BFGoodrich T/A's



SAUGUS SPEEDWAY SPECIALS



SIZE	PRICE	FET
P185/70Rx13	58.28	2.13
P195/70Rx13	60.06	2.17
P205/70Rx13	63.42	2.41
P185/70Rx14	59.85	2.20
P205/70Rx14	66.05	2.55
P215/70Rx14	68.99	2.65

SIZE	PRICE	FET
P225/70Rx14	72.03	2.84
P235/70Rx14	75.18	2.91
P215/70Rx15	73.92	2.75
P225/70Rx15	78.96	2.89
P235/70Rx15	81.38	3.19
P255/70Rx15	89.36	3.50



T/A 70's

P195/60Rx13	62.37	2.03
P215/60Rx13	66.05	2.26
P215/60Rx14	70.98	2.43
P235/60Rx14	77.07	2.70

P245/60Rx14	80.43	2.87
P235/60Rx15	84.42	2.86
P255/60Rx15	91.14	3.14
P275/60Rx15	95.87	3.14



T/A 60's

P215/50Rx13	64.58	2.19
P235/50Rx13	68.67	2.42
P245/50Rx14	78.65	2.68

P265/50Rx14	85.37	2.95
P265/50Rx15	87.78	3.12
P275/50Rx15	92.19	3.24
P295/50Rx15	101.85	3.59



T/A 50's

ALL TERRAIN T/A and SPORT TRUCK RADIALS *

8.5Rx14	75.71	3.08
*10Rx15	101.75	4.69
*12Rx15	116.03	5.48

900Rx15	92.82	4.15
*10Rx16.5	106.68	4.73
*12Rx16.5	121.70	5.53



MUD TERRAIN RADIAL T/A

27-8.50Rx14	82.01	3.36
31-10.50Rx15	109.52	4.52
33-12.50Rx15	124.95	5.52

30-9.50Rx15	100.07	4.14
31-10.50Rx16.5	114.77	4.57
33-12.50Rx16.5	130.95	5.74



CRAGAR • WESTERN • ENKEI • CENTERLINE • WHEELS NOW ON SALE • CATALYTIC TEST TUBES • TRUCK SLIDING REAR WINDOWS • HOLLEY • CARTER • EDELBROCK • GABRIEL • KC • KYB • HOBRECHT & RAPID COOL

AUTOCESSORIES
WHOLESALE

(213) 894-4045

8801 Sepulveda Blvd., Van Nuys
Hi Performance & Off Road Tire Center